



fluid handling equipment & accessories

JULY 2012



Agriculture



Automotive



Transport



Mining



Industry


macnaught
the professionals' choice

the professionals' choice

Established in 1948 by Colin Macnaught, Macnaught Pty. Ltd. is a 100% Australian-owned company which designs and manufactures a wide range of lubrication and fluid transfer equipment including grease pumps and guns, oil pumps and guns, fuel pumps, hose reels and flow meters. These products are sold into agricultural, industrial, automotive, mining, aviation and marine industries around the world.

Macnaught has built a strong reputation for designing and manufacturing innovative, high quality, durable products that are well supported with technical advice and service. A 10 year warranty is offered on "Macnaught Design" products and the availability of spare parts for these products is guaranteed for 10 years. Furthermore, all products are supported by a network of authorised service centres.

Macnaught products are the choice of industry professionals around the world. Macnaught is an environmentally responsible manufacturer that is committed to:

- Efficient energy use practices and production efficiency
- Waste minimisation and recycling
- Pollution prevention
- Preservation of the local environment and surrounding ecosystems
- Research and development on the environmental performance of Macnaught products
- Meeting and exceeding applicable legislation and regulations

Through the active participation of all employees in Macnaught's Environmental Management System, Macnaught demonstrates its commitment to responsible environmental management and continuous improvement.



contents

greasing equipment

manual - cartridge/bulk fill	1
manual - bulk delivery	3
manual - bulk transfer	4
powered - cartridge/bulk fill	5
powered - pumps	6

oil equipment

manual	9
powered - pumps (t-series)	13
powered - pumps (r-series)	16
powered - drum pump packages	19
powered - trolley based packages	21
powered - ibc/wall mount packages	22
control guns - non-metered	24
control guns - metered	25
in-line meters	29

fuel equipment

manual	31
meters	34

hose reels

retracta®	35
metal enclosed	37
metal single pedestal	38
metal twin pedestal	39
metal twin pedestal - powered	40

accessories

greasing - kits	41
greasing	42
oil	45
fuel	46
hose reel	47
trolleys	47

flexigun®

A classic Macnaught grease gun, the FLEXIGUN® incorporates a unique variable stroke piston and valve arrangement for true 'one handed' operation and can produce increased pressure through short strokes or high volume shot using a full stroke.



	K29-01	K29-17	K32-01	K29-01-11	K29-12 Kit	FGK1-01 Kit	FGK1-02 Kit
KY SUPERGRIP™ coupler	■	■	■	■	• K29-01 FLEXIGUN	• K29-01 FLEXIGUN	• K32-01 FLEXIGUN
Fully serviceable	■	■	■	■	• Robust blow moulded case	• Robust blow moulded case	• Robust blow moulded case
Flex extension	230mm	430mm	230mm	230mm	• Spare KY SUPERGRIP coupler	• Spare KY SUPERGRIP coupler	• Spare KY SUPERGRIP coupler
Typical output pressure range*	34 450 – 68 900 kPa (5000 – 10000psi)				• 450g grease cartridge	• 450g grease cartridge	• KIN hypodermic injector needle
Output volume per shot	0.68g	0.68g	0.68g	0.68g	• KIN hypodermic injector needle	• KZDXL straight needle point coupler	• KZDXL straight needle point coupler
Wetted parts	Aluminium, steel, Nitrile rubber cork and Nylon			Zinc, steel, Nitrile, cork and Nylon	• KDR right angle coupler	• KDR right angle coupler	• KDR right angle coupler
Cartridge	450g	450g	400g	450g			
Bulk fillable	■	■	■	■			
Max grease type	NLGI No.2	NLGI No.2	NLGI No.2	NLGI No.2			
Warranty¹	10 years	10 years	10 years	10 years			
Parts guarantee²	10 years	10 years	10 years	10 years			

*Output pressure is a product of input force provided by the operator.
 Note¹ Subject to Macnaught warranty terms and conditions, see inside back cover.
 Note² Parts available for 10 years from deletion or upgrade of model.

levergun™

Designed for high pressure, high volume greasing, this lever action grease gun can easily clear blocked or damaged grease nipples.



- KY SUPERGRIP™ 3 jaw high pressure coupler for positive connection
- Develops 12,000psi with ease to push grease through the toughest of applications
- Screw fasteners for easy servicing. No rivets.
- Machined barrel thread makes it easier to screw to the head
- Lock the plunge rod into the follower for easier bleeding
- Models to suit 400 gram cartridges available
- Robust zinc pull handle
- Heavy duty 1.6mm thick barrel
- Reversible follower for cartridge or bulk applications
- Stepped barrel for easy grip



macnaughtdesign

10
mechanical parts

2
electrical parts

1
wearing parts

warranty



	K45-01	K45-04	K40-01	K45-01-11
KY SUPERGRIP™ coupler	■	■	■	■
Fully serviceable	■	■	■	■
Extension	150mm rigid	430mm flexible	150mm rigid	150mm rigid
Typical output pressure range*	48 300 – 82 750 kPa (7000 – 12000psi)		48 300 – 82 750 kPa (7000 – 12000psi)	
Output volume per shot	1.5g	1.5g	1.5g	1.5g
Wetted parts	Aluminium, steel, Nitrile rubber, cork and Nylon	Aluminium, steel, Nitrile rubber, cork and Nylon	Aluminium, steel, Nitrile rubber, cork and Nylon	Zinc, steel, Nitrile rubber, cork and Nylon
Cartridge	450g	450g	400g	450g
Bulk fillable	■	■	■	■
Max grease type	NLGI No.2	NLGI No.2	NLGI No.2	NLGI No.2
Warranty ¹	10 years	10 years	10 years	10 years
Parts guarantee ²	10 years	10 years	10 years	10 years

*Output pressure is a product of input force provided by the operator.
 Note¹ Subject to Macnaught warranty terms and conditions, see inside back cover.
 Note² Parts available for 10 years from deletion or upgrade of model.

minilube® and superlube™

Designed to offer powerful and professional greasing with robust portability, both minilube® and superlube™ products incorporate a spring loaded priming system to feed the KR pressurite™ grease gun. Both systems are designed for those applications where compressed air is unavailable but bulk grease is preferred.

K7 Minilube®



KY SUPERGRIP™
3 jaw high pressure coupler for positive connection

K7 Minilube® incorporates a robust foot actuated primer pump that feeds grease to the KR Pressurite gun. Each prime provides 30 shots on high pressure setting

K4 Superlube™

Models available to suit grease pails from 12.5kg to 22kg

KY SUPERGRIP™
3 jaw high pressure coupler for positive connection

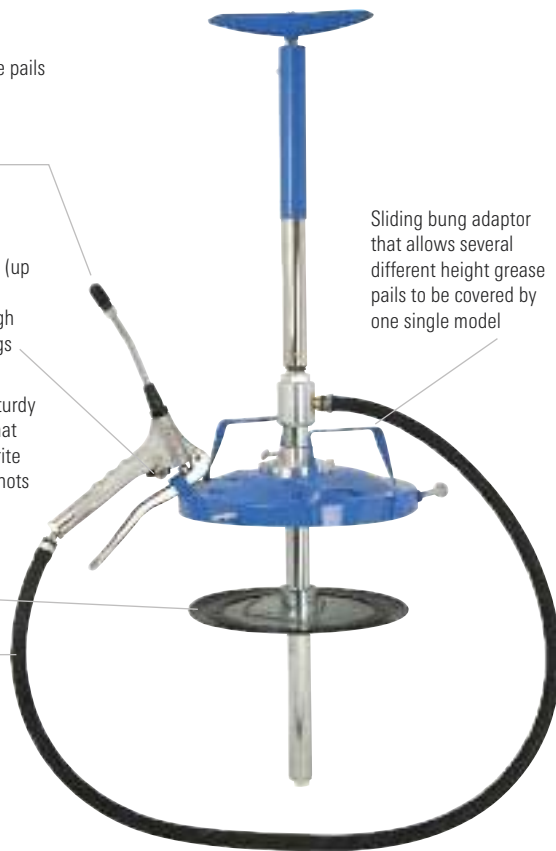
Switch between high pressure (up to 10,000psi) to break through blocked grease nipples and high volume to quickly pack bearings

K4 Superlube incorporates a sturdy hand actuated primer pump that feeds grease to the KR Pressurite gun. Each prime provides 60 shots on high pressure setting

Rubber edged follower plate

3m of delivery hose

Sliding bung adaptor that allows several different height grease pails to be covered by one single model



Switch between high pressure (up to 10,000psi) to break through blocked grease nipples and high volume to quickly pack bearings

KR Pressurite™ Gun for dual pressure action

1.5m of delivery hose

Models available to suit grease pails from 2.5kg to 5kg



K7-01

K4-01

K7-24

K7-67

	K7-01	K4-01	K7-24	K7-67
KR PRESSURITE dual pressure grease gun	■	■	■	■
Fully serviceable	■	■	■	■
Pail size	2.5kg	20kg	2.5kg container	5kg container
Typical output pressure range from KR PRESSURITE grease gun*	48 300 – 82 750 kPa (7000 – 12000psi) on high pressure setting			
Output volume per shot 'High Pressure' setting	0.45g	0.45g	0.45g	0.45g
Output volume per shot 'High Volume' setting	1.25g	1.25g	1.25g	1.25g
Output shots per prime	30	60	30	30
Wetted parts	aluminium, steel and Nitrile rubber			
Bulk fillable	-	-	■	■
Max grease type	NLGI No.2	NLGI No.2	NLGI No.2	NLGI No.2
Warranty ¹	10 years	10 years	10 years	10 years
Parts guarantee ²	10 years	10 years	10 years	10 years

*Output pressure is a product of input force provided by the operator.
Note¹ Subject to Macnaught warranty terms and conditions, see inside back cover.
Note² Parts available for 10 years from deletion or upgrade of model.

grease transfer pump

An economical solution for refilling most standard grease guns from larger bulk pails. The standard J3 fills Macnaught's range of hand and air powered guns easily via the 9mm filler / bleeder valve located on all models. The larger minilube® can be refilled from the J3 by transferring directly into the container using the follower plate as a guide. The J3B model replaces the rigid extension for a 1.5mm hose allowing refilling of either centralised lube system reservoirs or directly into track lube vessels. The recent upgrade from the J2 now allows several different height pails to be accommodated from the one unit by using the sliding bung adaptor instead of the old fixed type. The J3 is the best choice for high volume / low pressure grease transfer especially in remote or on-the-job applications.



10
mechanical parts

2
electrical parts

1
wearing parts

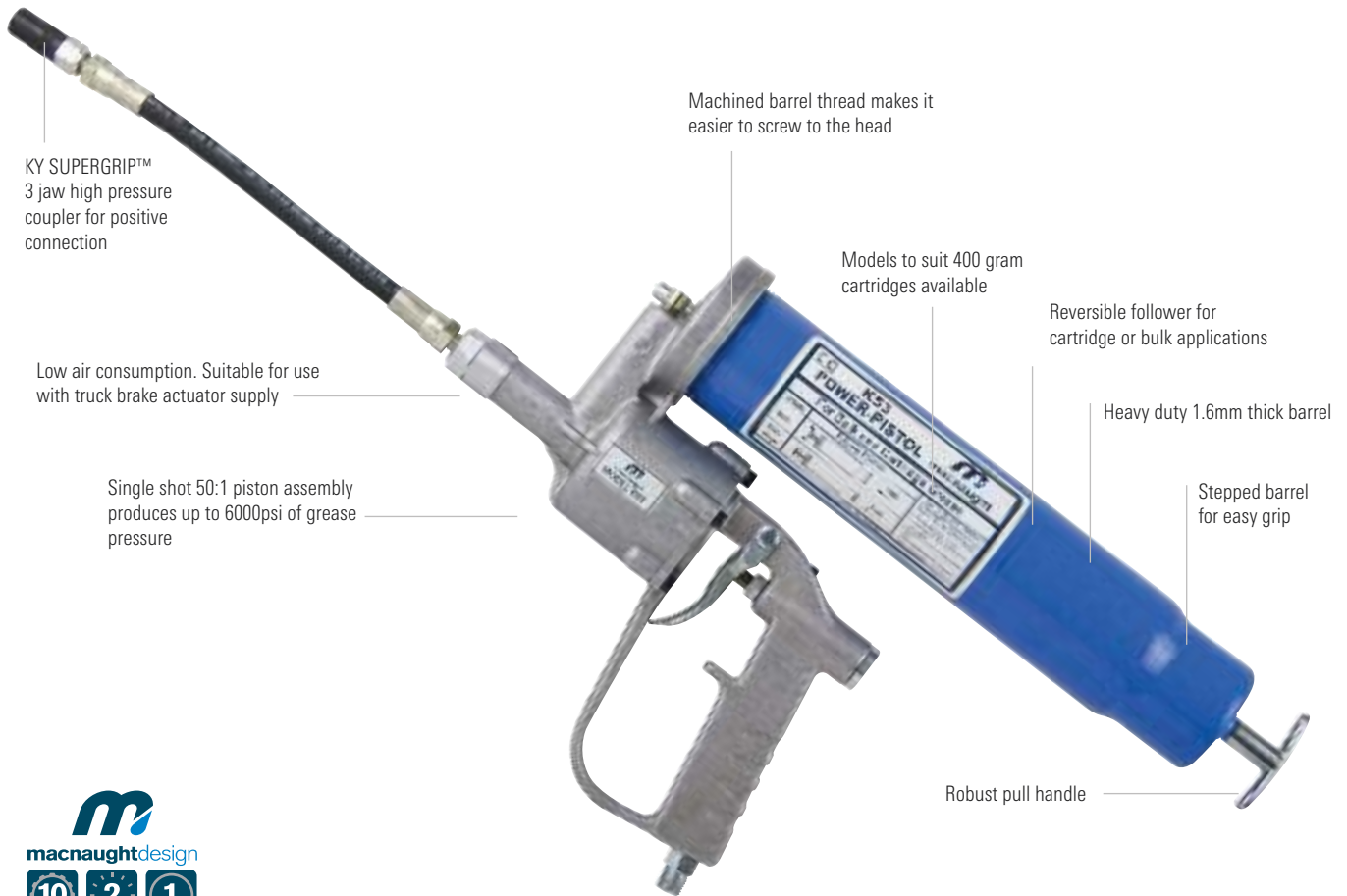
warranty

	J3-01	J3B-01
J65 bulk fill nozzle	■	-
Fully serviceable	■	■
Extension	Rigid	1500mm x 12mm hose
Suits pail size	20kg	20kg
Output volume	54g per stroke	54g per stroke
Wetted parts	aluminium, steel, brass, Nitrile rubber and Teflon	aluminium, steel, brass, Nitrile rubber and Teflon
Max grease type	NLGI No.2	NLGI No.2
Warranty ¹	10 years	10 years
Parts guarantee ²	10 years	10 years

Note¹ Subject to Macnaught warranty terms and conditions, see inside back cover.
 Note² Parts available for 10 years from deletion or upgrade of model.

powerpistol™

The powerpistol™ is a single shot grease gun that combines portability with effortless one handed air powered operation. Low air consumption makes the powerpistol™ ideal for use with truck and bus brake system air supply.



K53-01

K54-01

	K53-01	K54-01
KY SUPERGRIP™ coupler	■	■
Fully serviceable	■	■
Extension	230mm flexible	230mm flexible
Max output pressure	41 400 kPa (6000 psi)	41 400 kPa (6000 psi)
Output volume per shot	0.7g	0.7g
Recommended air pressure	620 kPa (90 psi)	620 kPa (90 psi)
Max air pressure	830 kPa (120 psi)	830 kPa (120 psi)
Min compressor size	0.026 M ³ /MIN (1 CFM)	0.026 M ³ /MIN (1 CFM)
Wetted parts	aluminium, steel, brass, Nitrile rubber, cork & Nylon	aluminium, steel, brass, Nitrile rubber, cork & Nylon
Air inlet	1/4" BSP (M)	1/4" BSP (M)
Cartridge	450g	400g
Bulk fillable	■	■
Max grease type	NLGI No.2	NLGI No.2
Warranty ¹	10 years	10 years
Parts guarantee ²	10 years	10 years

Note¹ Subject to Macnaught warranty terms and conditions, see inside back cover.
Note² Parts available for 10 years from deletion or upgrade of model.

powerlube™ and maxilube™

Macnaught's range of air operated grease pumps and greasing systems represent innovative and efficient tools for a wide variety of workshop and industrial applications. Designed for use with grease containers from 12.5kg to 180kgs and powerful enough to move common grease to where it needs to be, the powerlube™ and maxilube™ range offers low air consumption air motors that due to the use of modern polymer materials, don't need to be lubricated.

Available in various kit formats or as bare pumps, these 50:1 ratio air operated greasing products are at home in applications from field based service trucks to large workshop environs to providing the punch to a centralised lube system.

The use of polymer material in the air motor means no lubrication is required

Available in various models to suit most pail sizes

Zinc components for underground coal mining compatibility

Robust yet lightweight materials

50:1 pump ratio for maximum grease pressure

Wide, flexible follower to suit most tapered pails

Low air consumption means smaller compressor and less power used

Strainer on pump inlet to prevent contamination

Revised lid assembly allows different height grease pails to be catered for.

KY SUPERGRIP™ 3 jaw high pressure coupler for positive connection

Tried and tested B2 booster gun and Z swivel to boost grease pressure up to 10,000psi

4m of tough high pressure grease hose



powerlube™

maxilube™



P3-0S2



P6-01

	powerlube® complete portable grease dispensing system	powerlube® portable greasing system complete, enclosed trolley based grease dispensing system	maxilube® complete portable grease dispensing system
Feature			
Pump ratio	50:1	50:1	50:1
Max pump output pressure	51 700kPa (7500psi)	51 700kPa (7500psi)	51 700kPa (7500psi)
Max gun output pressure	68 900 kPa (10 000psi)	68 900 kPa (10 000psi)	68 900 kPa (10 000psi)
Bare pump	P3001	P6001	P6001
Suited to pails	20kg	12.5 – 25kg	55kg
Hose	4m x 6mm ID delivery hose	4m x 6mm ID delivery hose	4m x 6mm ID delivery hose
Control gun	B2 Booster Gun c/w ZSB swivel	B2 Booster Gun c/w ZSB swivel	B2 Booster Gun c/w ZSB swivel
Output	460g/min	460g/min	460g/min
Airline lubricator	not required	not required	not required
Fully serviceable	■	■	■
Warranty ¹	10 years	10 years	10 years
Parts guarantee ²	10 years	10 years	10 years
Grease viscosity	up to NLGI No.2	up to NLGI No.2	up to NLGI No.2
Wetted components	zinc and hard chrome-plated carbon steel, brass, Nitrile and polyurethane rubber	zinc and hard chrome plated carbon steel, brass, Nitrile and polyurethane rubber	zinc and hard chrome plated carbon steel, brass, Nitrile and polyurethane rubber
Max air pressure	150psi	150psi	150psi
Min air pressure	60psi	60psi	60psi
Air inlet	1/4" NPT (F)	1/4" NPT (F)	1/4" NPT (F)
Pump outlet	1/4" NPT (F)	1/4" NPT (F)	1/4" NPT (F)
Min compressor size	0.08m ³ /min (3 cfm)	0.08m ³ /min (3 cfm)	0.08m ³ /min (3cfm)

Note¹ Subject to Macnaught warranty terms and conditions, see inside back cover.
 Note² Parts available for 10 years from deletion or upgrade of model.

high output grease system



P8-11

GS100-01

R5000GPLF-01

	maxilube®	maxilube® portable greasing system	high output greasing system
Feature	complete portable grease dispensing system	complete enclosed trolley based portable grease dispensing system	heavy duty grease pump
Pump ratio	50:1	50:1	58:1
Max pump output pressure	51 700kPa (7500psi)	51 700kPa (7500psi)	59 900 kPa (8700psi)
Max gun output pressure	68 900 kPa (10 000psi)	68 900 kPa (10 000psi)	68 900 kPa (10 000psi)
Bare pump	P8-01	P8-01	R5000G-01
Suited to pails	180kg	180kg	180kg
Hose	2.5m x 6mm ID delivery hose	GR100 hose reel (10m x 6mm HP Grease hose)	2.5m x 6mm ID delivery hose
Control gun	B2 Booster Gun c/w ZSB swivel	B2 Booster Gun c/w ZSB swivel	B2 Booster Gun c/w ZSB swivel
Output	460g/min	460g/min	6.8kg/min
Airline lubricator	not required	not required	included
Fully serviceable	■	■	■
Warranty ¹	10 years	10 years	10 years
Parts guarantee ²	10 years	10 years	10 years
Grease viscosity	up to NLGI No.2	up to NLGI No.2	up to NLGI No.2
Wetted components	zinc and hard chrome plated carbon steel, brass, Nitrile and polyurethane rubber	zinc and hard chrome plated carbon steel, brass, Nitrile and polyurethane rubber	zinc and hard chrome plated carbon steel, brass, Nitrile and polyurethane rubber
Max air pressure	150psi	150psi	150psi
Min air pressure	60psi	60psi	60psi
Air inlet	1/4" NPT (F)	1/4" NPT (F)	1/4" NPT (F)
Pump outlet	1/4" NPT (F)	1/4" NPT (F)	3/8" BSP (F)
Min compressor size	0.08m ³ /min (3 cfm)	0.08m ³ /min (3 cfm)	0.5m ³ /min (18 cfm)

Note¹ Subject to Macnaught warranty terms and conditions, see inside back cover.
Note² Parts available for 10 years from deletion or upgrade of model.

■ hand operated oil pumps

Designed to transfer oil from either 205 or 60 litre drums, the C11 oil pump can handle the tough jobs dispensing right through to gear oils viscosities.

C16 is designed to transfer mineral oils in and out of gearboxes, transfer cases and differentials as well as evacuating sump oil out of an inboard marine engine.

Optional CF Filter caters for stringent ATF or Hydraulic Fluid requirements



The C11 with adjustable bung adaptor to suit both 205 & 60 litre drums

C16 is great for in-field use for top-ups and extraction



C11-01

C16-01

Special features	variable pivot setting on handle	transfer and evacuation
Pump output	75mL/stroke	500mL
Hose length	1.8m	300mm
Non drip nozzle	manual	n/a
Drum size	205L & 60L	n/a
Fully serviceable	■	■
Compatible fluids	engine oil, gear oils to SAE140, auto trans and hydraulic fluid	mineral oils to SAE140
Wetted parts	aluminium, steel, brass, Nitrile rubber and Teflon	polypropylene, Nitrile rubber, steel
Warranty ¹	10 years	10 years
Parts guarantee ²	10 years	10 years

Note¹ Subject to Macnaught warranty terms and conditions, see inside back cover.
Note² Parts available for 10 years from deletion or upgrade of model.

■ hand operated oil pumps

The C7-N is truly a multi-purpose gear oil pump with having a sliding bung adaptor fitted to allow multiple drum heights across the 15 to 25 litre containers. Delivers on the down-stroke (includes 3 different drum adapters).

The C7-01 is the same pump, but offers a 1.8m hose and nozzle.

For underground coal applications the new C7Z-01 includes both a spout as well as the 1.8m hose and nozzle to allow the pump to be used for either method.



	C7N-01	C7-01	C7Z-01	C7-51
	Gear oil pump	Gear oil pump with hose	UG Coal compatible gear oil pump with hose	Gear oil pump with ATF strainer and hose
Pump output	100mL/stroke	100mL/stroke	100mL/stroke	100mL/stroke
Hose	-	1.8m rubber hose	1.8m rubber hose and spout	1.8m rubber hose
Non drip nozzle	-	manual	manual	manual
Drum size	15L - 25L	15L - 25L	15L - 25L	15L - 25L
Drum adapter	multiple sliding bung adapters	multiple sliding bung adapters	multiple sliding bung adapters	multiple sliding bung adapters
Fully serviceable	■	■	■	■
Warranty ¹	10 Years	10 Years	10 Years	10 Years
Parts guarantee ²	10 Years	10 Years	10 Years	10 Years
Compatible fluids	kerosene, two stroke mix, lubricating oils to SAE140	kerosene, two stroke mix, lubricating oils to SAE140	kerosene, two stroke mix, lubricating oils to SAE140	kerosene, two stroke mix, lubricating oils to SAE140
Wetted components	aluminium, steel, Nitrile and delrin zinc			

Note¹ Subject to Macnaught warranty terms and conditions, see inside back cover.
Note² Parts available for 10 years from deletion or upgrade of model.

■ spring loaded pumps

These spring loaded oil pumps provide the means to automatically dispense engine and gear oils by simply pressing the oil gun trigger.



	S20H-01	S20HA-01	S20H-01P	S60H-01	S60HA-01
Pump output	340mL/prime	340mL/prime	500mL/prime	500mL/prime	500mL/prime
Hose	1.5m kink resistant hose	1.5m kink resistant hose	1.5m kink resistant hose	1.5m kink resistant hose	1.5m kink resistant hose
Dispense gun	■	■	■	■	■
Drum size	20L	20L	20 – 60L	60L	60L
Drum bung	■	■	Sliding	■	■
ATF filter	-	■	-	-	■
Fully serviceable	■	■	■	■	■
Compatible fluids	Engine oil, gear oils to SAE140, auto trans and hydraulic fluid				
Wetted parts	Aluminium, steel, zinc, brass, polypropylene, Nitrile rubber and PVC				
Warranty ¹	10 years	10 years	10 years	10 years	10 years
Parts guarantee ²	10 years	10 years	10 years	10 years	10 years

Note¹ Subject to Macnaught warranty terms and conditions, see inside back cover.

Note² Parts available for 10 years from deletion or upgrade of model.

■ multi-purpose lever pump

A classic Macnaught hand pump, the A2-01 and A2-51 is ideal for transferring a wide range of mineral oils and non-corrosive solvents and chemicals.

variable handle setting for light or heavy fluids

Viton and EPDM o'rings supplied

built-in bung opener

A2H supplied with 1.8 m (6 ft) delivery hose and nozzle

telescopic suction tube fits 60 L (16 US gal) to 205 L (55 US gal) drums



A2-01

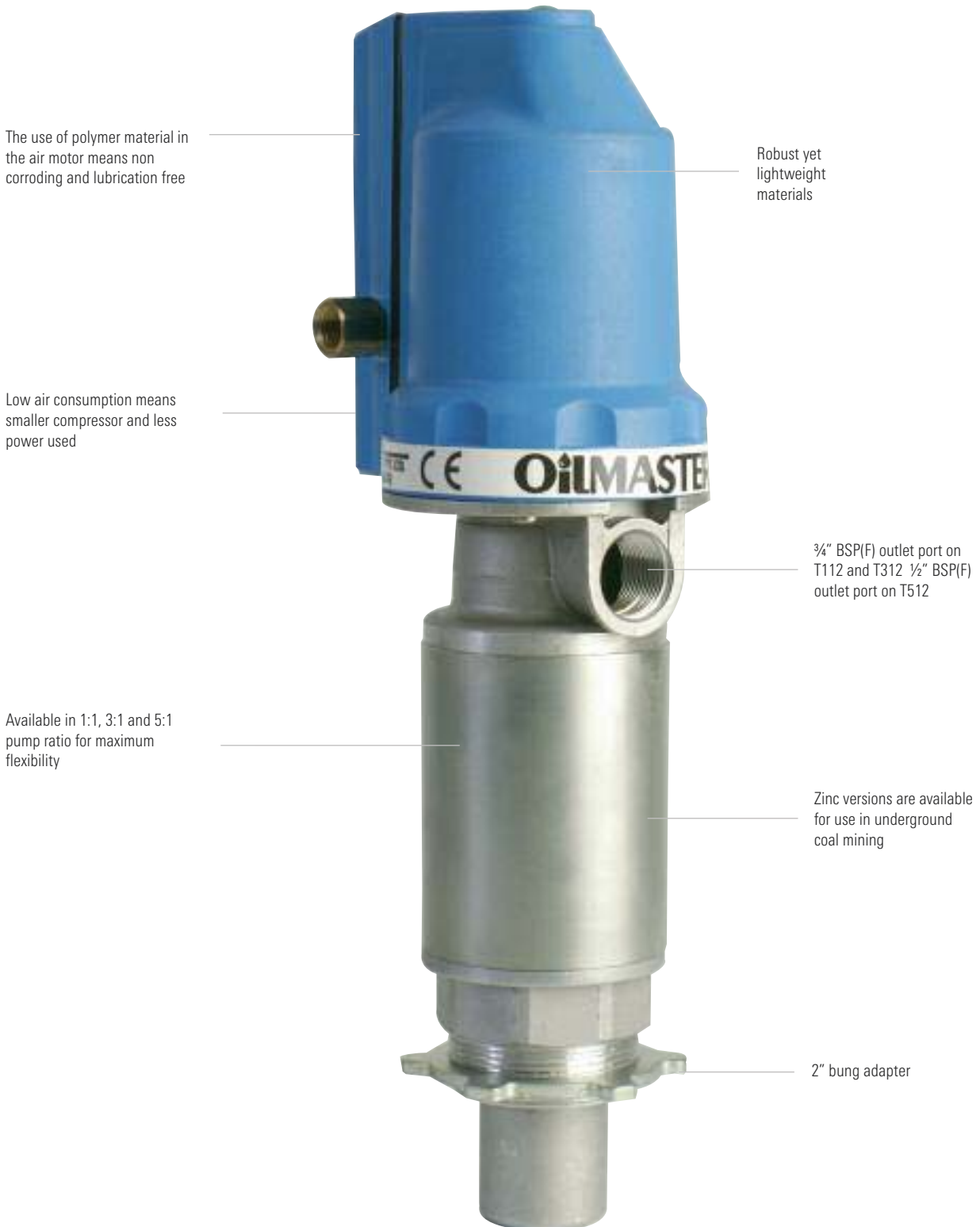
A2-51

Special features	supplied with Nitrile (fitted), Viton and EPDM O'rings variable handle setting for light or heavy fluids built in bung opener	
Pump output	250mL/stroke	250mL/stroke
Hose	N/A	1.8m PVC/Nitrile
Drum size	60L - 205L	60L - 205L
Drum adapter	2" built in	2" built in
Fully serviceable	■	■
Warranty ¹	10 years	10 years
Parts guarantee ²	10 years	10 years
Compatible fluids	diesel, lubricating oils to SAE90 and other non-corrosive solvents and chemicals. To determine liquid compatibility consult O'ring chart at www.macnaught.com.au/persistent/catalogue_files/products/a2a2haa8multipurposedrumppumpwithoringchart_r13.pdf	
Wetted components	aluminium, steel, zinc, brass, Teflon plus Nitrile, Viton or EPDM dependent on installed O'ring	aluminium, steel, zinc, brass, Teflon plus Nitrile and PVC hose, Viton or EPDM dependent on installed O'ring

Note¹ Subject to Macnaught warranty terms and conditions, see inside back cover.
 Note² Parts available for 10 years from deletion or upgrade of model.

oilmaster® t-series™ air operated oil pumps

With no need for air-line lubrication and a low air consumption design this robust yet lightweight range of air operated stub and drum pumps are perfect for small to medium workshop and mobile installations.



oilmaster® t-series™ stub pumps



T112S-01

T112S-01-11

T312S-01

T312S-01-11

T512S-01

T512S-01-11

	T112S-01	T112S-01-11	T312S-01	T312S-01-11	T512S-01	T512S-01-11
Pump ratio	1:1	1:1	3:1	3:1	5:1	5:1
Output SAE 10*	23 L/min	23 L/min	13 L/min	13 L/min	11 L/min	11 L/min
Output SAE 15W-40*	22 L/min	22 L/min	12 L/min	12 L/min	10 L/min	10 L/min
Output SAE 90*	21 L/min	21 L/min	11 L/min	11 L/min	9 L/min	9 L/min
Airline lubricator	Not Required	Not Required	Not Required	Not Required	Not Required	Not Required
Pressure relief valve	-	-	■	■	■	■
2" bung adapter	■	■	■	■	■	■
Fully serviceable	■	■	■	■	■	■
Warranty ¹	10 Years	10 Years	10 Years	10 Years	10 Years	10 Years
Parts guarantee ²	10 Years	10 Years	10 Years	10 Years	10 Years	10 Years
Compatible fluids	Engine and gear oils up to SAE140, auto trans, hydraulic fluid and anti-freeze / anti-boil					
Wetted components	zinc, hard chrome plated carbon steel, brass, Nitrile and polyurethane rubber and Aluminium (only in standard unit)					
Min-Max air pressure	400-1030kPa (60/150psi)	400-1030kPa (60/150psi)	400-1030kPa (60/150psi)	400-1030kPa (60/150psi)	400-1030kPa (60/150psi)	400-1030kPa (60/150psi)
Min air compressor	0.3m ³ /min (10cfm)	0.3m ³ /min (10cfm)	0.3m ³ /min (10cfm)	0.3m ³ /min (10cfm)	0.15m ³ /min (5cfm)	0.15m ³ /min (5cfm)
Air inlet	1/4" NPT(F)	1/4" NPT(F)	1/4" NPT(F)	1/4" NPT(F)	1/4" NPT(F)	1/4" NPT(F)
Pump outlet	3/4" BSP(F)	3/4" BSP(F)	3/4" BSP(F)	3/4" BSP(F)	1/2" BSP(F)	1/2" BSP(F)
Pump inlet	1" BSP(F)	1" BSP(F)	1" BSP(F)	1" BSP(F)	1" BSP(F)	1" BSP(F)

Note* Pump tested at 100psi c/w 1" PD meter.
 Note¹ Subject to Macnaught warranty terms and conditions, see inside back cover.
 Note² Parts available for 10 years from deletion or upgrade of model.



TD20
Wall bracket to suit T and R series stub pumps

oilmaster® t-series™ drum pumps



Please Note: future models may utilise alternative suction tube than that shown.



	T112T-01	T112T-01-11	T312T-01	T312T-01-11	T512T-01	T512T-01-11
Pump ratio	1:1	1:1	3:1	3:1	5:1	5:1
Output SAE 10*	23L/min	23L/min	13L/min	13L/min	11L/min	11L/min
Output SAE 15W-40*	22L/min	22L/min	12L/min	12L/min	10L/min	10L/min
Output SAE 90*	21L/min	21L/min	11L/min	11L/min	9L/min	9L/min
Airline lubricator	■	■	■	■	■	■
Pressure relief valve	-	-	■	■	■	■
2" bung adapter	■	■	■	■	■	■
Fully serviceable	■	■	■	■	■	■
Warranty ¹	10 Years	10 Years	10 Years	10 Years	10 Years	10 Years
Parts guarantee ²	10 Years	10 Years	10 Years	10 Years	10 Years	10 Years
Compatible fluids	Engine and gear oils up to SAE140, auto trans, hydraulic fluid and anti-freeze / anti-boil					
Wetted components	Zinc, hard chrome plated carbon steel, brass, Nitrile and polyurethane rubber and Aluminium (only in standard model)					
Min-Max air pressure	400-1030kPa (60/150psi)	400-1030kPa (60/150psi)	400-1030kPa (60/150psi)	400-1030kPa (60/150psi)	400-1030kPa (60/150psi)	400-1030kPa (60/150psi)
Min air compressor	0.3m ³ /min (10cfm)	0.3m ³ /min (10cfm)	0.3m ³ /min (10cfm)	0.3m ³ /min (10cfm)	0.15m ³ /min (5cfm)	0.15m ³ /min (5cfm)
Air inlet	1/4" NPT(F)	1/4" NPT(F)	1/4" NPT(F)	1/4" NPT(F)	1/4" NPT(F)	1/4" NPT(F)
Pump outlet	3/4" BSP(F)	3/4" BSP(F)	3/4" BSP(F)	3/4" BSP(F)	1/2" BSP(F)	1/2" BSP(F)
Pump inlet	Suction Tube	Suction Tube	Suction Tube	Suction Tube	Suction Tube	Suction Tube

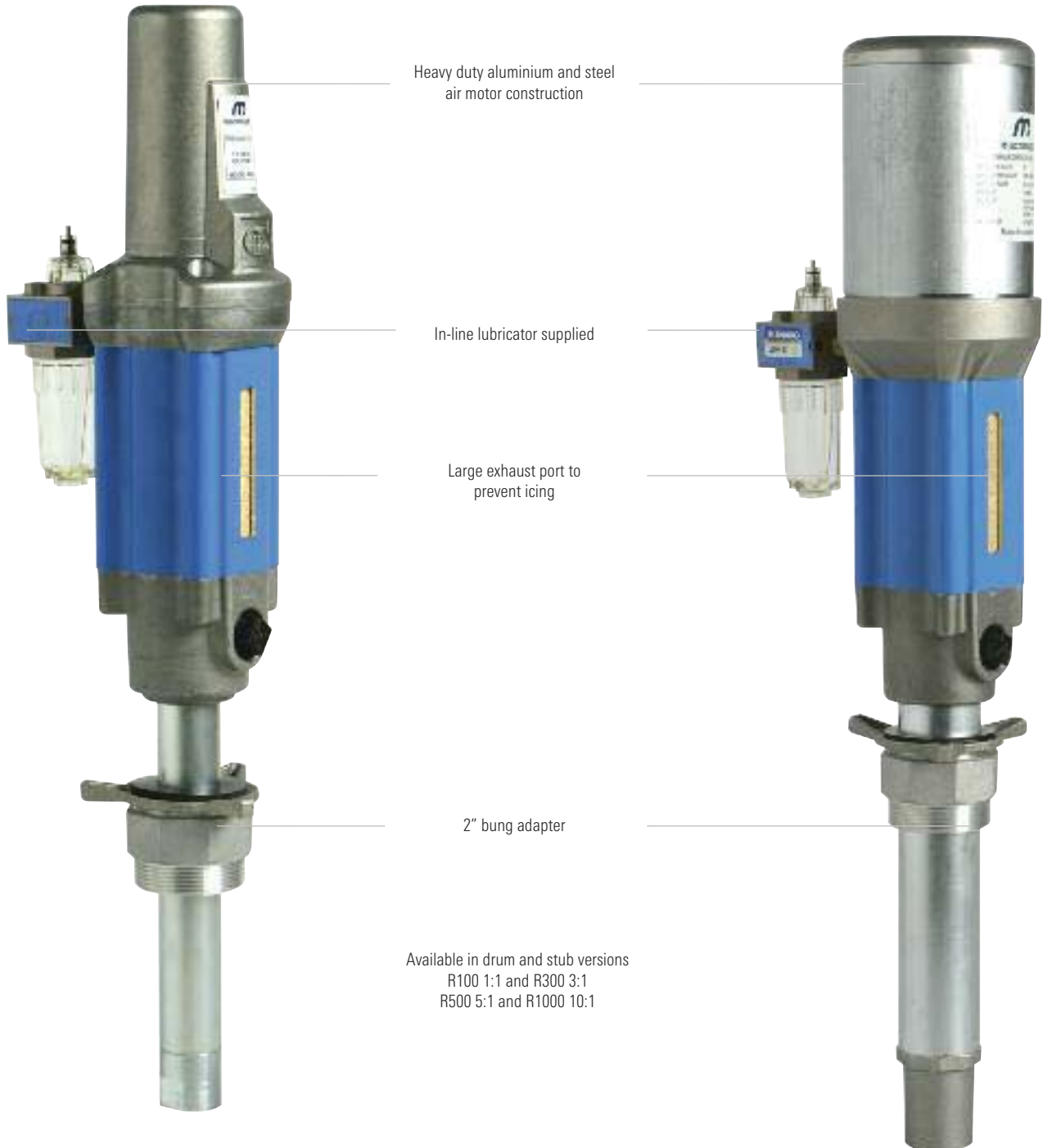
Note* Pump tested at 100psi c/w 1" PD meter.

Note¹ Subject to Macnaught warranty terms and conditions, see inside back cover.

Note² Parts available for 10 years from deletion or upgrade of model.

■ r-series™ air operated oil pumps

A heavy duty solution for medium to large workshop and mobile applications. The r-series range of air operated stub and drum pumps has been designed for maximum performance and long service life.



r-series™ stub pumps



Please Note: future models may utilise alternative suction tube than that shown.



R300S-01

R500S-01

R1000S-01

Pump ratio	3:1	5:1	10:1
Output SAE 10*	23L/min	32L/min	18L/min
Output SAE 15W-40*	19L/min	30L/min	17L/min
Output SAE 90*	18L/min	28L/min	15L/min
Airline lubricator	■	■	■
Pressure relief valve	-	■	■
2" bung adapter	■	■	■
Fully serviceable	■	■	■
Warranty ¹	10 Years	10 Years	10 Years
Parts guarantee ²	10 Years	10 Years	10 Years
Compatible fluids	Engine and gear oils up to SAE140, auto trans and hydraulic fluid, diesel, kerosene and anti-freeze/anti-boil (soft, self-collapsing greases - R1000S only)		
Wetted components	Aluminium, Nitrile rubber, Teflon and zinc plated carbon steel		
Min-Max air pressure	400-1030kPa (60/150psi)	400-1030kPa (60/150psi)	400-1030kPa (60/150psi)
Air inlet	1/4" NPT(F)	1/4" NPT(F)	1/4" NPT(F)
Pump outlet	3/4" BSP(F)	3/4" BSP(F)	3/4" BSP(F)
Pump inlet	1" BSP(F)	1" BSP(F)	1" BSP(F)
Min air compressor	0.16m ³ /min (6cfm)	0.3m ³ /min (10cfm)	0.5m ³ /min (18cfm)

Note* Pump tested at 100psi c/w 1" PD meter.
Note¹ Subject to Macnaught warranty terms and conditions, see inside back cover.
Note² Parts available for 10 years from deletion or upgrade of model.



TD20

Wall bracket to suit T and R series stub pumps

r-series™ drum pumps



R100T-01 R300T-01 R500T-01 R1000T-01

	R100T-01	R300T-01	R500T-01	R1000T-01
Pump ratio	1:1	3:1	5:1	10:1
Output SAE 10*	60L/min	23L/min	32L/min	18L/min
Output SAE 15W-40*	45L/min	19L/min	30L/min	17L/min
Output SAE 90*	43L/min	18L/min	28L/min	15L/min
Airline lubricator	■	■	■	■
Pressure relief valve	-	-	■	■
2" bung adapter	■	■	■	■
Fully serviceable	■	■	■	■
Warranty ¹	10 Years	10 Years	10 Years	10 Years
Parts guarantee ²	10 Years	10 Years	10 Years	10 Years
Compatible fluids	Engine and gear oils up to SAE140, auto trans and hydraulic fluid, diesel, kerosene and anti-freeze/anti-boil (soft, self-collapsing greases - R1000S only)			
Wetted components	Aluminium, Nitrile rubber, Teflon and zinc plated carbon steel			
Min-Max air pressure	400-1030kPa (60/150psi)	400-1030kPa (60/150psi)	400-1030kPa (60/150psi)	400-1030kPa (60/150psi)
Air inlet	¼" NPT(F)	¼" NPT(F)	¼" NPT(F)	¼" NPT(F)
Pump outlet	¾" BSP(F)	¾" BSP(F)	¾" BSP(F)	¾" BSP(F)
Pump inlet	Suction Tube	Suction Tube	Suction Tube	Suction Tube
Min air compressor	0.22m ³ /min (8cfm)	0.16m ³ /min (6cfm)	0.3m ³ /min (10cfm)	0.5m ³ /min (18cfm)

Note* Pump tested at 100psi c/w 1" PD meter.
 Note¹ Subject to Macnaught warranty terms and conditions, see inside back cover.
 Note² Parts available for 10 years from deletion or upgrade of model.

■ drum based oil dispensing systems

Designed for simple, single point oil dispensing, the drum based oil dispensing systems provide performance and convenience.



All systems are available without a gun. Please refer to price list.



	T112THG-01	T112THGE-01	T312THG-01	T312THGE-01
Pump ratio	1:1	1:1	3:1	3:1
Pump	T112T-01	T112T-01	T312T-01	T312T-01
Outlet hose length	3m x 3/4"	3m x 3/4"	3m x 1/2"	3m x 1/2"
Oil control gun	HG20R-01	HG20R-012E-01	HG20R-01	HG20R-012E-01
Output SAE10*	8 L/min	8 L/min	8 L/min	8 L/min
Output 15W-40*	7 L/min	7 L/min	7 L/min	7 L/min
Output SAE140*	6 L/min	6 L/min	6 L/min	6 L/min
Container	205L drum	205L drum	205L drum	205L drum
Airline lubricator	not required	not required	not required	not required
Pressure relief valve	-	-	built In	built In
2" bung adapter	■	■	■	■
Fully serviceable	■	■	■	■
Warranty ¹	10 years	10 years	10 years	10 years
Parts guarantee ²	10 years	10 years	10 years	10 years
Compatible fluids	oils up to SAE140, automatic trans fluid, engine oil, gear oil and hydraulic oil			
Wetted components	aluminium, zinc and hard chrome plated carbon steel, brass, Nitrile and polyurethane rubber			
Max air pressure	1030kPa (150psi)	1030kPa (150psi)	1030kPa (150psi)	1030kPa (150psi)
Min air pressure	400kPa (60psi)	400kPa (60psi)	400kPa (60psi)	400kPa (60psi)
Min air compressor	0.3m ³ /min (10cfm)	0.3m ³ /min (10cfm)	0.3m ³ /min (10cfm)	0.3m ³ /min (10cfm)
Air inlet	1/4" NPT (F)	1/4" NPT (F)	1/4" NPT (F)	1/4" NPT (F)

Note* Pump tested at 100psi c/w HG55 oil control gun.

Note¹ Subject to Macnaught warranty terms and conditions, see inside back cover.

Note² Parts available for 10 years from deletion or upgrade of model.

Please Note: future models may utilise alternative suction tube than that shown.

■ drum based oil dispensing systems

Designed for simple, single point oil dispensing, the drum based oil dispensing systems provide performance and convenience.



All systems are available without a gun. Please refer to price list.



	R100THG-01	R100THGE-01	R300THG-01	R300THGE-01
Pump ratio	1:1	1:1	3:1	3:1
Pump	R100T-01	R100T-01	R300T-01	R300T-01
Outlet hose length	3m x 3/4"	3m x 3/4"	3m x 1/2"	3m x 1/2"
Oil control gun	HG20R-01	HG20R-012E-01	HG20R-01	HG20R-012E-01
Output SAE10*	12 L/min	12 L/min	12 L/min	12 L/min
Output 15W-40*	9 L/min	9 L/min	9 L/min	9 L/min
Output SAE140*	8 L/min	8 L/min	8 L/min	8 L/min
Container	205L drum	205L drum	205L drum	205L drum
Airline lubricator	■	■	■	■
Pressure relief valve	-	-	-	-
2" bung adapter	■	■	■	■
Fully serviceable	■	■	■	■
Warranty ¹	10 years	10 years	10 years	10 years
Parts guarantee ²	10 years	10 years	10 years	10 years
Compatible fluids	oils up to SAE140, automatic trans fluid, engine oil, gear oil, hydraulic oil, diesel, kerosene, anti-freeze/anti-boil			
Wetted components	aluminium, Nitrile rubber, carbon PFTE, zinc plated carbon steel and brass			
Max air pressure	1030kPa (150psi)	1030kPa (150psi)	1030kPa (150psi)	1030kPa (150psi)
Min air pressure	400kPa (60psi)	400kPa (60psi)	400kPa (60psi)	400kPa (60psi)
Min air compressor	0.22m ³ /min (8cfm)	0.22m ³ /min (8cfm)	0.16m ³ /min (6cfm)	0.16m ³ /min (6cfm)
Air inlet	1/4" NPT (F)	1/4" NPT (F)	1/4" NPT(F)	1/4" NPT(F)

Note* Pump tested at 100psi c/w HG55 oil control gun.

Note¹ Subject to Macnaught warranty terms and conditions, see inside back cover.

Note² Parts available for 10 years from deletion or upgrade of model.

■ trolley based 205L dispensing systems

Trolley based oil dispense systems offer the ultimate in portability. Low drum mounting for ease of setup together with a combination of high performing components offers function and flexibility for any workshop environment.



All systems are available without a gun. Please refer to price list.



	OS50G-01	OS50GE-01	OS100G-01	OS100GE-01
Pump ratio	3:1	3:1	3:1	3:1
Pump	T312T-01	T312T-01	R300S-01	R300S-01
Outlet hose length	trolley based oil dispense systems include Retracta OLP100 - reel includes 10m x 12.5mm oil hose			
Oil control gun	HG20R-01	HG20F-012E-01	HG20R-01	HG20F-012E-01
Output SAE10*	7 L/min	7 L/min	11 L/min	11 L/min
Output 15W-40*	6 L/min	6 L/min	9 L/min	9 L/min
Output SAE 80W-90*	5 L/min	5 L/min	8 L/min	8 L/min
Container	205L drum	205L drum	205L drum	205L drum
Airline lubricator	not required	not required	■	■
Pressure relief valve	built In	built In	-	-
2" bung adapter	■	■	■	■
Fully serviceable	■	■	■	■
Warranty ¹	10 years	10 years	10 years	10 years
Parts guarantee ²	10 years	10 years	10 years	10 years
Compatible fluids	oils up to SAE140 including automatic transmission fluid, engine oil, gear oil, hydraulic oil, diesel, kerosene and anti-freeze/anti-boil			
Wetted components	aluminium, zinc and hard chrome plated carbon steel, brass, Nitrile and polyurethane rubber, carbon PTFE and zinc plated carbon steel			
Max air pressure	1030kPa (150psi)	1030kPa (150psi)	1030kPa (150psi)	1030kPa (150psi)
Min air compressor	0.3m ³ /min (10cfm)	0.3m ³ /min (10cfm)	0.16m ³ /min (6cfm)	0.16m ³ /min (6cfm)
Min air pressure	400kPa (60psi)	400kPa (60psi)	400kPa (60psi)	400kPa (60psi)
Air inlet	1/4" NPT (F)	1/4" NPT (F)	1/4" NPT (F)	1/4" NPT (F)
Inlet hose connection	not applicable	not applicable	not applicable	not applicable

Note* Pump tested at 100psi c/w HG55 oil control gun.

Note¹ Subject to Macnaught warranty terms and conditions, see inside back cover.

Note² Parts available for 10 years from deletion or upgrade of model.

■ ibc/wall mounted oil dispensing systems

Designed to be hung onto an ibc (intermediate bulk container) frame, the range of oil dispensing systems offers quality components, robust performance and convenient change over.



	OS400B-01	OS400G-01	OS500B-01	OS500G-01
Pump ratio	3:1	3:1	3:1	3:1
Pump	T312S-01	T312S-01	R300S-01	R300S-01
Outlet hose length	10m	10m	10m	10m
Oil control gun	not included	HG20R-01	not included	HG20R-01
Output SAE10*	8 L/min	8 L/min	12 L/min	12 L/min
Output 15W-40*	7 L/min	7 L/min	9 L/min	9 L/min
Output SAE140*	5 L/min	5 L/min	8 L/min	8 L/min
Container	1000L IBC	1000L IBC	1000L IBC	1000L IBC
Airline lubricator	not required	not required	■	■
Pressure relief valve	built in	built in	-	-
2" bung adapter	■	■	■	■
Fully serviceable	■	■	■	■
Warranty ¹	10 years	10 years	10 years	10 years
Parts guarantee ²	10 years	10 years	10 years	10 years
Compatible fluids	oils up to SAE140, automatic trans fluid, engine oil, gear oil and hydraulic oil oils up to SAE140, automatic trans fluid, engine oil, gear oil, hydraulic oil, diesel, kerosene, anti-freeze/anti-boil.			
Wetted components	aluminium, zinc and hard chrome plated carbon steel, brass, Nitrile and polyurethane rubber aluminium, Nitrile rubber, Teflon, zinc plated carbon steel and brass			
Max air pressure	1030kPa (150psi)	1030kPa (150psi)	1030kPa (150psi)	1030kPa (150psi)
Min air pressure	400kPa (60psi)	400kPa (60psi)	400kPa (60psi)	400kPa (60psi)
Min air compressor	0.3m ³ /min (10cfm)	0.3m ³ /min (10cfm)	0.16m ³ /min (6cfm)	0.16m ³ /min (6cfm)
Air inlet	1/4" NPT (F)	1/4" NPT (F)	1/4" NPT (F)	1/4" NPT (F)
Outlet hose connection	1/2" BSP (M)	not applicable	1/2" BSP (M)	not applicable
Inlet hose connection	2" BSP (F)	2" BSP (F)	2" BSP (F)	2" BSP (F)

Note* Pump tested at 100psi c/w HG55 oil control gun.

Note¹ Subject to Macnaught warranty terms and conditions, see inside back cover.

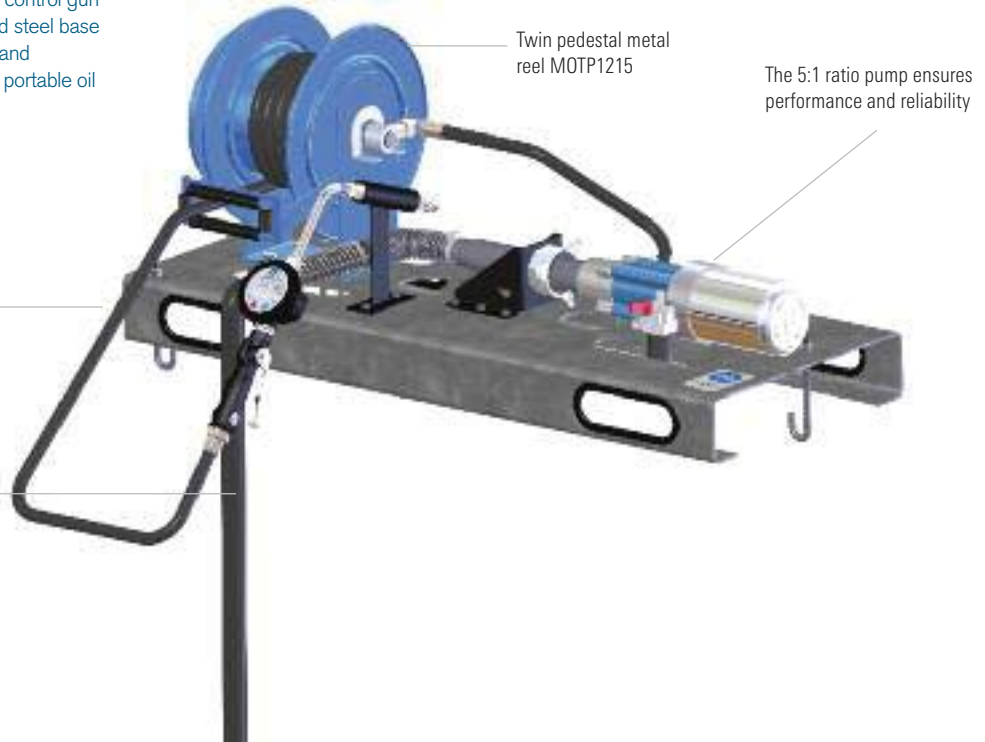
Note² Parts available for 10 years from deletion or upgrade of model.

■ ibc mounted dispensing system

Incorporating a mix of Macnaught's field proven fluid handling equipment, the IBC (intermediate bulk container) mounted dispensing range includes pneumatic pump, reel and oil control gun mounted to a sturdy hot dip galvanised steel base frame and is complete with all fixings and hardware necessary for the rigours of portable oil storage and dispense.

Hot dipped galvanised base plate to secure all components of the system

Fittings and connectors are included to connect all of the components together as well as connection to the IBC outlet



	OS900G-01	OS900GE-01	OS900IM-01	OS950G-01	OS950GE-01	OS950IM-01
Pump ratio	5:1	5:1	5:1	5:1	5:1	5:1
Pump	T512S-01	T512S-01	T512S-01	R500S-01	R500S-01	R500S-01
Outlet hose length	15m	15m	15m	15m	15m	15m
Oil control gun	HG20R-01	HG20F-012E-01	HG20R-01	HG20R-01	HG20F-012E-01	HG20R-01
In-Line Meter	none	none	IM012E-01	none	none	IM012E-01
Output SAE10*	8 L/min	12 L/min	12 L/min	12 L/min	12 L/min	12 L/min
Output 15W-40*	7 L/min	10 L/min	10 L/min	10 L/min	10 L/min	10 L/min
Output SAE140*	6 L/min	8 L/min	8 L/min	8 L/min	8 L/min	8 L/min
Container	1000L	1000L	1000L	1000L	1000L	1000L
Airline lubricator	not required	not required	not required	■	■	■
Pressure relief valve	built in	built in	built in	built in	built in	built in
2" bung adapter	■	■	■	■	■	■
Fully serviceable	■	■	■	■	■	■
Warranty ¹	10 years	10 years	10 years	10 years	10 years	10 years
Parts guarantee ²	10 years	10 years	10 years	10 years	10 years	10 years
Compatible fluids	oils up to SAE140, automatic trans fluid, engine oil, gear oil, and hydraulic oil, diesel, kerosene, anti-freeze/anti-boil					
Wetted components	aluminium, zinc, hard chrome plated steel, brass, Nitrile, polyurethane rubber					
Max air pressure	1030kPa (150psi)	1030kPa (150psi)	1030kPa (150psi)	1030kPa (150psi)	1030kPa (150psi)	1030kPa (150psi)
Min air pressure	400kPa (60psi)	400kPa (60psi)	400kPa (60psi)	400kPa (60psi)	400kPa (60psi)	400kPa (60psi)
Min air compressor	0.15m ³ /min (5cfm)	0.3m ³ /min (10cfm)	0.3m ³ /min (10cfm)	0.3m ³ /min (10cfm)	0.3m ³ /min (10cfm)	0.3m ³ /min (10cfm)
Air inlet	1/4" NPT (F)	1/4" NPT (F)	1/4" NPT (F)	1/4" NPT (F)	1/4" NPT (F)	1/4" NPT (F)
IBC Breather included	■	■	■	■	■	■
IBC outlet hose kit included	■	■	■	■	■	■
Galvanised Base Plate included	■	■	■	■	■	■

Note* Pump tested at 100psi c/w HG55 oil control gun.

Note¹ Subject to Macnaught warranty terms and conditions, see inside back cover.

Note² Parts available for 10 years from deletion or upgrade of model.

■ **coolant control gun**

■ **oil control guns**



CCG-01

HG20R-01

HG20F-01

Flow range	up to 30L/min	up to 30L/min	up to 30 L/min
Inlet swivel	3/8" BSP(F)	1/2" BSP(F)	1/2" BSP (F)
Non drip nozzle	-	■	■
Latching trigger	■	■	■
Fully serviceable	-	■	■
Warranty ¹	5 Years	10 Years	10 Years
Parts guarantee ²		10 Years	10 Years
Compatible fluids	coolant	engine and gear oils up to SAE140, auto trans and hydraulic fluid	engine and gear oils up to SAE140, auto trans and hydraulic fluid
Wetted parts	polypropylene, brass, zinc plated mild steel, Nitrile	aluminium, Nitrile rubber, mild steel, zinc	aluminium, Nitrile rubber, mild steel, zinc
Max working pressure	2500kPa (365psi)	6900kPa (1000psi)	6900kPa (1000psi)
Max working temp	50°C	70°C	70°C
Weight	0.5kg	0.8kg	0.8kg
Extension type	Rigid	Rigid	Flexible

Note¹ Subject to Macnaught warranty terms and conditions, see inside back cover.
Note² Parts available for 10 years from deletion or upgrade of model.

control guns - metered



HG20R-012M-01

HG20R-012E-01

HG20F-012M-01

HG20F-012E-01

Flow range	up to 30 L/min	up to 30L/min	up to 30 L/min	up to 30 L/min
Inlet swivel	½" BSP(F)	½" BSP(F)	½" BSP (F)	½" BSP(F)
Meter	Mechanical	Electronic	Mechanical	Electronic
Meter Accuracy	+/- 1%	+/- 0.5%	+/- 1%	+/- 0.5%
Features	7 digit totaliser	6 digit totaliser	7 digit totaliser	6 digit totaliser
Extension	Rigid with non-drip nozzle	Rigid with non-drip nozzle	Flexible with non-drip nozzle	Flexible with non-drip nozzle
Latching Trigger	■	■	■	■
Fully Serviceable	■	■	■	■
Warranty	10 years	10 years	10 years	10 years
Parts Guarantee	10 years	10 years	10 years	10 years
Compatible Fluids	engine, gear, ATF, hydraulic oils up to SAE140 viscosity & anti-freeze/anti boil			
Wetted Components	aluminium, Nitrile rubber mild steel, zinc, acetal, PEI resin			
Max Working Pressure	6,900 kPa (1000 psi)	6,900 kPa (1000 psi)	6,900 kPa (1000 psi)	6,900 kPa (1000 psi)
Weight (with fittings)	1.5kg	1.5kg	1.5kg	1.5kg

Note¹ Subject to Macnaught warranty terms and conditions, see inside back cover.
Note² Parts available for 10 years from deletion or upgrade of model.

control guns - metered (hg series)

Macnaught metered oil control guns offer proven oval gear metering technology which delivers industry leading strength, durability and accuracy. Perfect for any automotive or transport workshop environment



control guns - metered (hg series)



HG40-01

HG45-01

HG55-01

HG60-01

	HG40-01	HG45-01	HG55-01	HG60-01
		automatic shut-off model		automatic shut-off model
Flow range	1-30 L/min	1-30 L/min	1-30 L/min	1-30 L/min
Inlet swivel	½" BSP (F)	½" BSP (F)	½" BSP (F)	½" BSP (F)
Meter	oval gear / mechanical	oval gear / mechanical	oval gear / digital	oval gear / digital
Meter accuracy (Flow rate)	+/- 1% (lube oils)	+/- 1% (lube oils)	+/- 0.5% (lube oils)	+/- 0.5% (lube oils)
Features	4-digit resettable batch totaliser 6-digit accumulative totaliser	pre-settable to 99.9ltrs AUTO shutoff 3-digit resettable batch totaliser 5-digit accumulative totaliser	5-digit resettable batch totaliser 6-digit accumulative totaliser sleep mode to conserve battery life EEPROM information retention for battery change	pre-settable to 1999.9ltrs AUTO Shutoff 5-digit resettable batch totaliser 6-digit accumulative totaliser sleep mode to conserve battery life EEPROM information retention for battery change
Extention	rigid	rigid	rigid	rigid
Non drip nozzle	automatic	automatic	automatic	automatic
Latching trigger	■	■	■	■
Fully serviceable	■	■	■	■
Warranty ¹	10 years	10 years	10 years	10 years
Parts guarantee ²	10 years	10 years	10 years	10 years
Compatible fluids	oils up to SAE140, automatic trans fluid, engine oil, gear oil, hydraulic oil, coolant			
Wetted components	acetal, aluminium, Nitrile rubber, mild steel			
Max working pressure	10 350kPa (1500psi)	10 350kPa (1500psi)	10 350kPa (1500psi)	10 350kPa (1500psi)
Weight (with fittings)	1.16kg	1.16kg	1.16kg	1.16kg

Note¹ Subject to Macnaught warranty terms and conditions, see inside back cover.
Note² Parts available for 10 years from deletion or upgrade of model.



HGFEK
250mm (10") flexible extension

high flow oil control guns

Heavy duty construction, full flow valving and quality oval gear meters make this range of high flow oil control guns a necessity in mining or any application that requires the fastest possible dispensing.



HG100-01

HG100-01-11

HG100-019M-01

HG100-019E-01

Flow range	up to 57 L/min	up to 57 L/min	3 - 57 L/min	3 - 57 L/min
Inlet swivel	3/4" BSP (F)	3/4" BSP (F)	3/4" BSP (F)	3/4" BSP (F)
Meter	-	-	Oval gear / Mechanical	Oval gear / Digital
Meter accuracy	-	-	+/- 1% (lube oils)	+/- 0.5% (lube oils)
Features	Hi-Flow Heavy duty design Trigger Guard for hand protection Balanced valve assembly for max flow control	Includes all HG100 Std features plus Zinc components to comply with UG Coal requirements	Includes all HG100 Std features plus 4-digit resettable batch totaliser 7-digit accumulative totaliser c/w protective shroud	Includes all HG100 Std features plus 6-digit digital display resettable batch totaliser resettable and non resettable totals flow rate mode c/w protective shroud
Extention	flexible	flexible	flexible	flexible
Non drip nozzle	manual	manual	manual	manual
Latching trigger	■	■	■	■
Fully serviceable	■	■	■	■
Warranty ¹	10 years	10 years	10 years	10 years
Parts guarantee ²	10 years	10 years	10 years	10 years
Compatible fluids	oils up to SAE140, automatic trans fluid, engine oil, gear oil, hydraulic oil, coolant			
Wetted components	aluminium, Nitrile rubber, mild steel, zinc	zinc, Nitrile rubber, mild steel	aluminium, Nitrile rubber, mild steel, acetal, zinc	PEI resin, aluminium, Nitrile rubber, mild steel
Max working pressure	10 350kPa (1500psi)	10 350kPa (1500psi)	10 350kPa (1500psi)	10 350kPa (1500psi)
Weight (with fittings)	2.2kg	2.2kg	2.2kg	2.2kg

Note¹ Subject to Macnaught warranty terms and conditions, see inside back cover.
Note² Parts available for 10 years from deletion or upgrade of model.

in-line oil meters

Incorporating Macnaught's oval gear technology, robust construction and quality register designs. This range of 1/2 inch in-line oil meters offers clean and accurate fluid measurement for most oil handling applications

Mechanical IM012M-01

Easy to read 4 digit batch total display

Protective shroud included

1/2" BSP(F) ports



7 digit accumulative totaliser

Electronic IM012E-01

Sleep mode to conserve battery life and EEPROM retention to save accumulated information plus large easy to read 6 digit LC display

1/2" BSP(F) ports

Face can be fitted at 90° increments

Protective shroud included



Pulse IM012P-01 for remote connection

Switch between resettable batch total, resettable total, non-reset total and flow rate display options



IM012M-01

IM012E-01

IM012P-01

	IM012M-01	IM012E-01	IM012P-01
Flow range	1 - 30L/min	1 - 30L/min	1 - 30L/min
Meter / register	Oval gear / Mechanical	Oval gear / Digital	Oval gear / Pulse output
Accuracy (flow rate)	+/- 1% (lube oils)	+/- 0.5% (lube oils)	+/- 0.5% (lube oils)
Features	4-digit resettable batch totaliser 7-digit accumulative totaliser	6-digit digital display resettable batch totaliser resettable and non resettable totals flow rate mode	pulse output model includes 1m fly lead either reed switch and/or hall effect sensor
Protective shroud	■	■	■
Inlet port	1/2" BSP (F)	1/2" BSP (F)	1/2" BSP (F)
Outlet port	1/2" BSP (F)	1/2" BSP (F)	1/2" BSP (F)
Fully serviceable	■	■	■
Warranty ¹	10 years	10 years	10 years
Parts guarantee ²	10 years	10 years	10 years
Compatible fluids	oils up to SAE140, automatic trans fluid, engine oil, gear oil, hydraulic oil, coolant, diesel, kerosene		
Wetted components	acetal, aluminium, Nitrile rubber, mild steel	acetal, aluminium, Nitrile rubber, mild steel	acetal, aluminium, Nitrile rubber, mild steel
Max working pressure	6 900kPa (1000psi)	6 900kPa (1000psi)	6 900kPa (1000psi)
Min/Max working Temp	-14° to 55°C	-14° to 55°C	-14° to 55°C
Weight (with fittings)	0.5kg	0.5kg	0.5kg

Note¹ Subject to Macnaught warranty terms and conditions, see inside back cover.
Note² Parts available for 10 years from deletion or upgrade of model.

Mechanical
IM019M-01

Easy to read 4 digit batch total display

3/4" BSP(F) ports



7 digit accumulative totaliser

Protective shroud included

Electronic
M019E-01

Sleep mode to conserve battery life and EEPROM retention to save accumulated information plus large easy to read 6 digit LC display

3/4" BSP(F) ports

Face can be fitted at 90° increments

Protective shroud included

Pulse IM012P-01 for remote connection

Switch between resettable batch total, resettable total, non-reset total and flow rate display options



IM019M-01

IM019E-01

IM019P-01

Flow range	3 - 80L/min	3 - 80L/min	3 - 80L/min
Meter / register	oval gear / mechanical	oval gear / digital	oval gear / pulse output
Accuracy (flow rate)	+/- 1% (lube oils)	+/- 0.5% (lube oils)	+/- 0.5% (lube oils)
Features	4-digit resettable batch totaliser 7-digit accumulative totaliser	6-digit digital display resettable batch totaliser resettable and non resettable totals flow rate mode	Pulse output model includes 1m fly lead either reed switch and/or hall effect sensor
Protective shroud	■	■	■
Inlet port	3/4" BSP (F)	3/4" BSP (F)	3/4" BSP (F)
Outlet port	3/4" BSP (F)	3/4" BSP (F)	3/4" BSP (F)
Fully serviceable	■	■	■
Warranty ¹	10 years	10 years	10 years
Parts guarantee ²	10 years	10 years	10 years
Compatible fluids	oils up to SAE140, automatic trans fluid, engine oil, gear oil, hydraulic oil and coolant		
Wetted components	acetal, aluminium, Nitrile rubber, mild steel	aluminium, Nitrile rubber, mild steel	aluminium, Nitrile rubber, mild steel
Max working pressure	10 350kPa (1500psi)	10 350kPa (1500psi)	10 350kPa (1500psi)
Min/Max working temp	-14° to 55°C	-14° to 55°C	-14° to 80°C (pulse only 55°C for LCD)
Weight (with fittings)	1.1kg	1kg	1kg

Note¹ Subject to Macnaught warranty terms and conditions, see inside back cover.
Note² Parts available for 10 years from deletion or upgrade of model.

■ rotary vane pump

An economical rotary pump designed to dispense diesel, kerosene and lubricating oils up to 20 L (5 US gal) per minute from 60 L (16 US gal) to 205 L (55 US gal) drums

Nozzle holder to stop fuel siphoning between uses

Sliding bung adaptor to handle both 205 & 60 litre drums



RVP-01

Pump output	Typical delivery rate 20L/min
Action	rotary
Hose	1.8m PVC/Nitrile hose
Drum size	60L - 205L
Drum adapter	2" sliding
Lockable handle	■
Nozzle holder	■
Built in strainer	-
Fully serviceable	■
Warranty ¹	10 years
Parts guarantee ²	10 years
Compatible fluids	diesel, kerosene and lubricating oils to SAE 90
Wetted components	aluminium, steel, zinc and Nitrile rubber

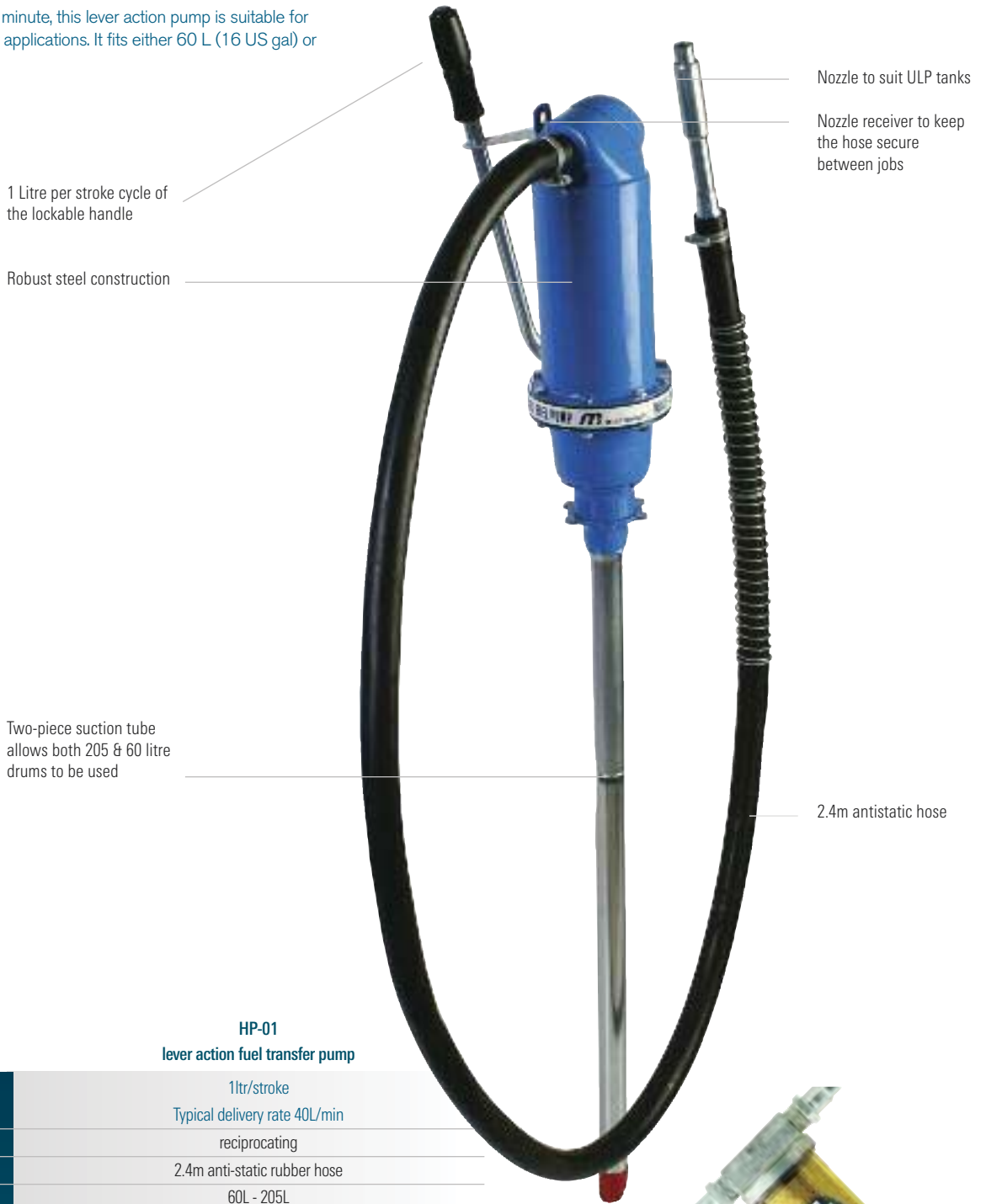
VA-01

fuel filter assembly to suit RVP
Supplied c/w 10µm disposable filter
Assembly includes fittings to suit pump
Not suitable for bio-diesel.

Note¹ Subject to Macnaught warranty terms and conditions, see inside back cover.
Note² Parts available for 10 years from deletion or upgrade of model.

litrestroke™

With an output of 40 L per minute, this lever action pump is suitable for most common fuel transfer applications. It fits either 60 L (16 US gal) or 205 L (55 US gal) drums.






10
mechanical parts



2
electrical parts



1
wear parts

warranty

HP-01
lever action fuel transfer pump

Pump output	1ltr/stroke Typical delivery rate 40L/min
Action	reciprocating
Hose	2.4m anti-static rubber hose
Drum size	60L - 205L
Drum adapter	2" built in
Lockable handle	■
Nozzle holder	■
Built in strainer	-
Fully serviceable	■
Warranty ¹	10 years
Parts guarantee ²	10 years
Compatible fluids	diesel, petrol, lubricating oils to SAE 30
Wetted components	steel, acetal, zinc and Nylon

HA-01

fuel filter assembly to suit HP litrestroke™
Supplied c/w 10µm disposable filter
Assembly includes fittings to suit pump
not suitable for bio-diesel

Note¹ Subject to Macnaught warranty terms and conditions, see inside back cover.
Note² Parts available for 10 years from deletion or upgrade of model.

rapidflo™

The GT Rapidflo™ is a durable impeller pump incorporating a gearbox for high output (up to 100 L/min) and easy operation. Designed for 205 L (55 US gal) drums, this pump is ideal for high volume fuel transfer. The pump body outlet has been upgraded to a 3/4" BSP threaded outlet, includes a 3/4" hose tail.

Robust 3/4" BSP threaded outlet comes complete with hose tail



Robust aluminium housing screwed together for ease of service and maintenance

Lockable handle and nozzle holder for security

High flow rate with close to one litre per revolution

Built in strainer

2.4m anti-static rubber hose compatible with un-leaded petrol and aviation fuel*

Three piece suction tube with sliding bung adapter to suit various size drums



GT-01
rapidflo™

GT-01-BD
rapidflo™

bi-lobe hi output rotary pump

bi-lobe hi output rotary pump

	GT-01 rapidflo™	GT-01-BD rapidflo™
Pump output	0.8L/rev Typical delivery rate 100L/min	0.8ltr/rev common delivery rate 100L/min
Action	rotary	rotary
Hose	2.4m anti-static rubber hose	2.4m anti-static rubber hose
Drum size	60L - 205L	60L - 205L
Drum adapter	2" sliding	2" sliding
Lockable handle	■	■
Nozzle holder	■	■
Built in strainer	■	■
Fully serviceable	■	■
Warranty ¹	10 years	10 years
Parts guarantee ²	10 years	10 years
Compatible fluids	diesel, petrol, kerosene, av gas*, lubricating oils to SAE30	bio-diesel kerosene, lubricating oils to SAE30
Wetted components	aluminium, steel, Nitrile, zinc and Viton	aluminium, steel, Viton, Nitrile rubber, nickel and 304 stainless steel



VA-01

Fuel filter assembly to suit GT

Supplied c/w 10µm disposable filter

Assembly includes fittings to suit pump

Not suitable for Bio Diesel

Note* - Users of aviation fuels must check material compatibility with the fuel product they are using.
Note¹ Subject to Macnaught warranty terms and conditions, see inside back cover.
Note² Parts available for 10 years from deletion or upgrade of model.

in-line fuel meters



DM100

- Robust aluminium meter body
- Oval gear technology for accuracy
- Low pressure drop for use with gravity fed systems
- No field calibration needed
- Rotatable face
- Suitable for Diesel, Oil and ULP.



DM100-BD

- Robust aluminium meter body
- Oval gear technology for accuracy
- Low pressure drop for use with gravity fed systems
- No field calibration needed
- Rotatable face
- Suitable for Bio-Diesel



DM150



DM100-01

DM100-01-BD

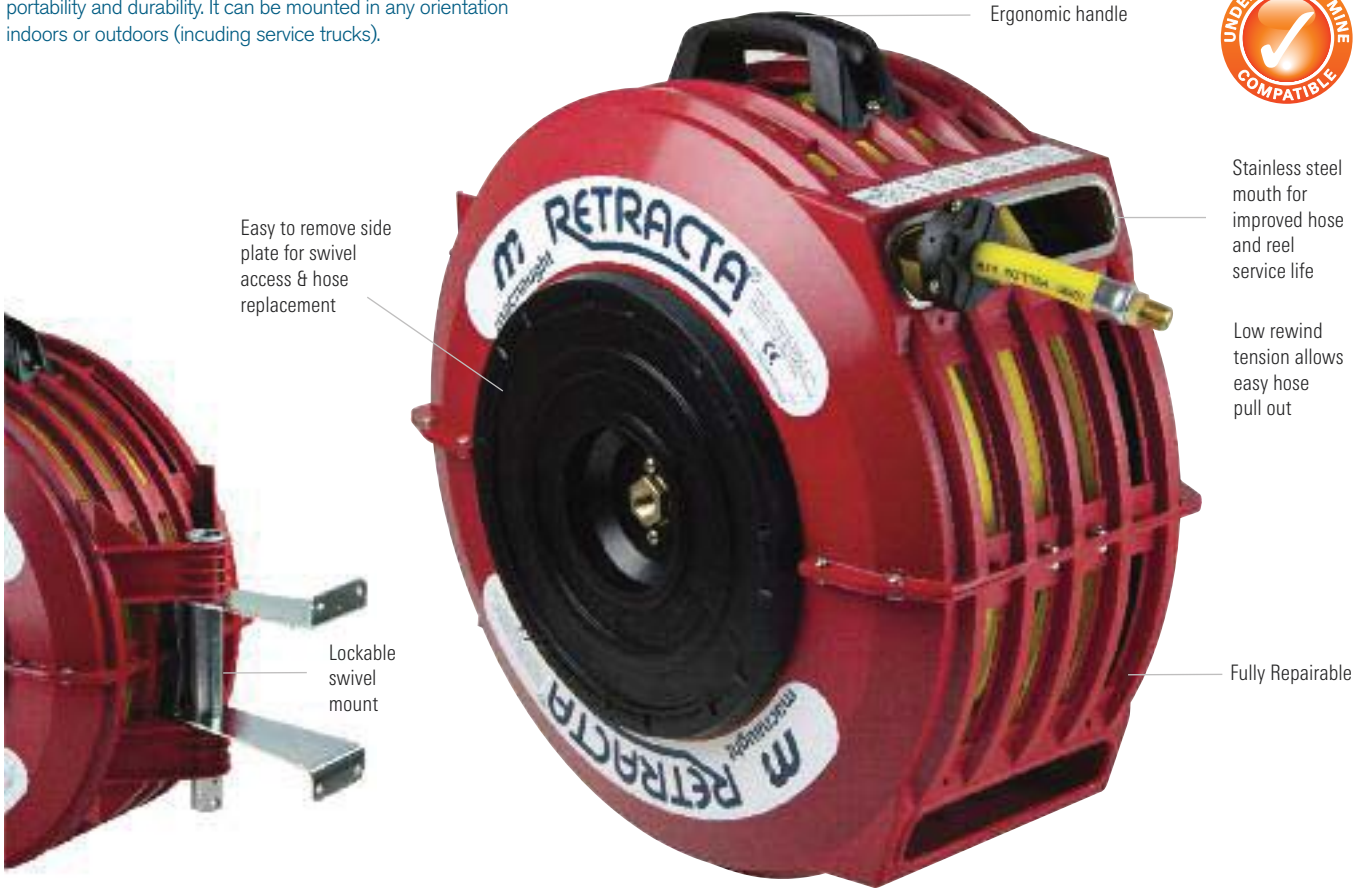
DM150-01

	DM100-01	DM100-01-BD	DM150-01
Flow range	3 - 80L/m	3 - 80L/m	3 - 80L/m
Meter / register	Oval gear / mechanical	Oval gear / Mechanical	Oval gear / Mechanical
Accuracy (flow rate)	+/- 1%	+/- 1%	+/- 1%
Features	low pressure drop makes this meter suitable for gravity fed systems register cap is rotatable for easy display mesh strainer included	All DM100 features plus Bio-Diesel compatibility	All DM100 features complete with HA1S filter housing and 10µm filter element
Inlet port	1" BSP (F)	1" BSP (F)	1" BSP (F)
Outlet port	1" BSP (F)	1" BSP (F)	1" BSP (F)
Fully serviceable	■	■	■
Warranty ¹	10 years	10 Years	10 Years
Parts guarantee ²	10 years	10 Years	10 Years
Compatible fluids	diesel, kerosene and petrol	bio-diesel only	diesel, kerosene and petrol
Wetted components	aluminium, zinc, brass and carbon steel	aluminium, nickel plated carbon steel, PEI resin, Viton and stainless steel	aluminium, zinc, brass, carbon steel and polycarbonate
Max working pressure	1030kPa (150psi)	1030kPa (150psi)	1030kPa (150psi)
Min/Max working Temp	-5° to 80°C	-5° to 80°C	-5° to 80°C
Weight (with fittings)	1.2kg	1.2kg	1.2kg

Note¹ Subject to Macnaught warranty terms and conditions, see inside back cover.
Note² Parts available for 10 years from deletion or upgrade of model.

retracta® hose reels

The Retracta® range is serviced easily and incorporates portability and durability. It can be mounted in any orientation indoors or outdoors (including service trucks).




macnaughtdesign

10
mechanical parts

2
electrical parts

1
wearing parts

warranty

AB100 AR100 AR200 AW100 AW150 AW200 CW100 DR100

Description	breathing air	compressed air/water	compressed air/water	compressed air/water	compressed air/water	compressed air/water	cold wash	domestic/garden water
Hose ID	10mm	10mm	12.5mm	10mm	10mm	12.5mm	12.5mm	12.5mm
Hose length	17m	20m	15m	20m	15m	15m	15m	18m
Working pressure	1 700kPa (250psi)	1 700kPa (250psi)	1 700kPa (250psi)	1 700kPa (250psi)	1 700kPa (250psi)	1 700kPa (250psi)	1 000kPa (150psi)	860kPa (125psi)
Hose material	reinforced PVC	superflex PVC	superflex PVC	reinforced PVC	reinforced PVC	reinforced PVC	reinforced PVC	reinforced PVC
Reel colour	blue	red	red	blue	blue	blue	blue	green
Hose colour	yellow	yellow	yellow	blue/yellow	blue/yellow	blue/yellow	white/blue	green/yellow
Max working temp	60°C	60°C	60°C	60°C	60°C	60°C	60°C	60°C
Reel inlet	3/8"	3/8"	3/8"	3/8"	3/8"	3/8"	3/8"	3/8"
Hose outlet	1/4"	1/4"	3/8"	1/4"	1/4"	3/8"	hose nozzle	hose nozzle
Weight	10kg	10kg	10kg	10kg	10kg	10kg	10kg	10kg
Max viscosity	n/a	n/a	n/a	n/a	n/a	n/a	n/a	n/a
Warranty ¹	10 years	10 years	10 years	10 years	10 years	10 years	10 years	10 years
Parts guarantee ²	10 years	10 years	10 years	10 years	10 years	10 years	10 years	10 years

Note¹ Subject to Macnaught warranty terms and conditions, see inside back cover.
Note² Parts available for 10 years from deletion or upgrade of model.

retracta® hose reels

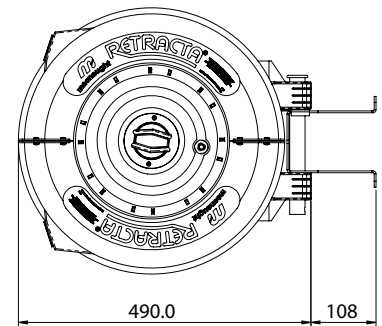
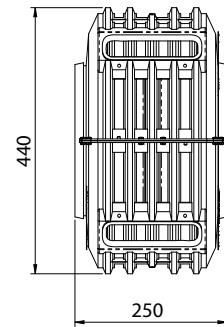
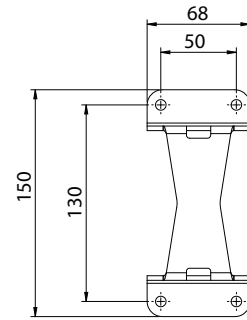
Industry compliant hose and fittings

Positive internal hose latching allows mounting in any position

Impact resistant UV stabilised polypropylene case



Re-tensionable main spring



FG100

GR100

HW100

HWP100

OA100

OLPG100

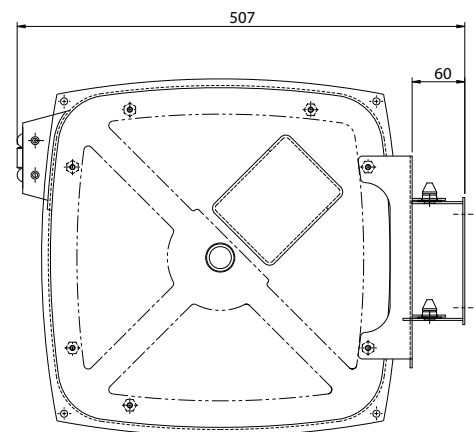
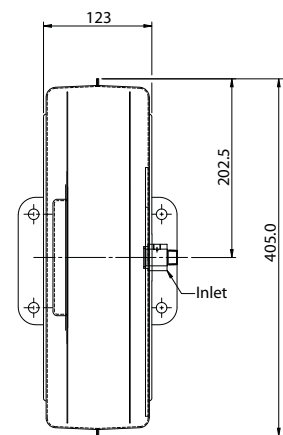
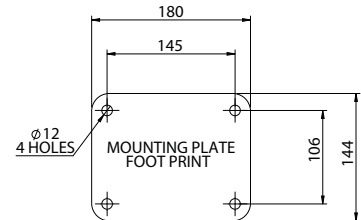
OLP100

OMP100

Description	food gas/ CO2	grease	hot water	high pressure hot water	oxy/acetylene	oxy/LPG	oil low pressure	oil medium pressure
Hose ID	12.5mm	6mm	10mm	5mm twin	5mm twin	5mm twin	12.5mm	10mm
Hose length	20m	10m	12m	12m	15m	15m	10m	10m
Working pressure	1 700kPa (250psi)	34 500kPa (5000psi)	1 400kPa (200psi)	20 700kPa (3000psi)	1 400kPa (200psi)	1 400kPa (200psi)	2 800kPa (400psi)	6 900kPa (1000psi)
Hose material	NTP	reinforced rubber (SAE100R2)	reinforced rubber	reinforced rubber (SAE100R2AT)	reinforced rubber (AS1335)	reinforced rubber (AS1335)	reinforced rubber (SAE100R6)	reinforced rubber (SAE100R1)
Reel colour	red	black	red	red	blue	black	blue	blue
Hose colour	clear	black	red	black	red/blue	orange/blue	black	black
Max working temp	60°C	n/a	90°C	95°C	n/a	n/a	95°C	n/a
Reel inlet	3/8"	1/4"	3/8"	3/8"	5/8" UNF	5/8" UNF	3/8"	3/8"
Hose outlet	1/4"	1/4"	3/8"	3/8"	5/8" UNF	5/8" UNF	1/2"	1/2"
Weight	10kg	13kg	10kg	12kg	13kg	13kg	10kg	13kg
Max viscosity	n/a	n/a	n/a	n/a	n/a	n/a	SAE140	SAE140
Warranty ¹	10 years	10 years	10 years	10 years	10 years	10 years	10 years	10 years
Parts guarantee ²	10 years	10 years	10 years	10 years	10 years	10 years	10 years	10 years

enclosed metal reels

The rugged metal casing protects the hose and adds years to its operating life in even the busiest of industrial workplaces. Its slim design is also a space saver, especially for multiple reel installations.



*Macnaught can produce metal reels to suit your specific requirements. Minimum order quantities apply.



EMA1015-01

EMA1210-01

EMG0615-01

EMO1210-01

Type	Air/Water	Air/Water	Grease	Oil
Hose ID	10 mm (3/8")	12 mm (1/2")	6 mm (1/4")	12 mm (1/2")
Hose length	15 m	10 m	15 m	10 m
Working pressure	3000 kPa (430 psi)	3000 kPa (430 psi)	34 500 kPa (5000 psi)	13 800 kPa (2000 psi)
Max op temp	80°C	80°C	100°C	100°C
Reel inlet	3/8" BSP	1/2" BSP	1/4" BSP	1/2" BSP
Hose outlet	3/8" BSP	1/2" BSP	1/4" BSP	1/2" BSP
Warranty ¹	5 year	5 year	5 year	5 year
Weight ¹	26kg	20kg	28kg	20kg

Note¹ Subject to Macnaught warranty terms and conditions, see inside back cover.

single pedestal metal reels

The heavy duty single pedestal reel features robust powder coated steel construction and integral spring system.

Adjustable guide arms and variable roller guide direction for versatility

Heavy duty powder coated steel construction

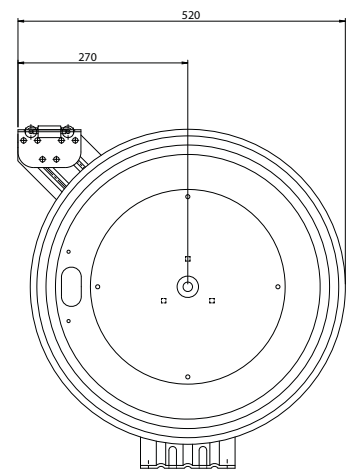
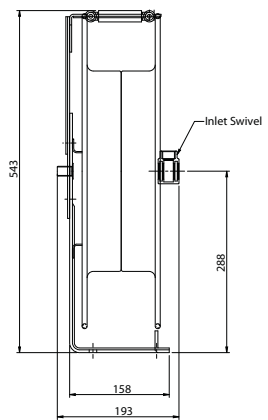
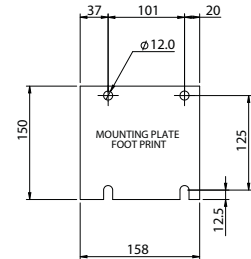
Heavy Duty steel spring enclosure for safety and reliability

Fully serviceable

Heavy duty hose supplied



MAS1020



MAS1020-01

MAS1220-01

MRS1320N-01

MGS0615-01

MOS1220-01

	MAS1020-01	MAS1220-01	MRS1320N-01	MGS0615-01	MOS1220-01
Type	Air/water	Air/water	Bare	Grease	Oil
Hose ID	10mm (3/8")	12mm (1.2")	N/A	6mm (1/4")	12mm (1.2")
Hose length	20m	20m	N/A	15m	20m
Working pressure	2100kPa (300psi)	2100kPa (300psi)	6 900kPa (1000psi)	34 500kPa (5000psi)	6900kPa (1000psi)
Max op temp	80°C	80°C	80°C	100°C	100°C
Reel inlet	3/8" BSP	1/2" BSP	1/2" BSP	1/4" BSP	1/2" BSP
Hose outlet	3/8" BSP	1/2" BSP	N/A	1/4" BSP	1/2" BSP
Warranty ¹	5 year	5 year	5 year	5 year	5 year
Weight	22kg	24kg	22kg	27.6kg	28kg

Note¹ Subject to Macnaught warranty terms and conditions, see inside back cover.

■ twin pedestal metal reels

The heavy duty twin pedestal reels are designed for added strength and durability. All spring rewind models have an external spring cartridge which allows cartridge replacement without removing the reel from its mounted position. Ideal for automotive, industrial and truck mount applications.

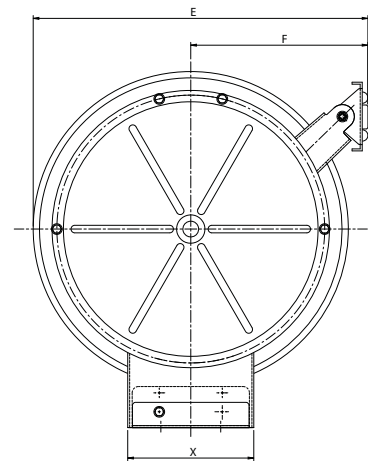
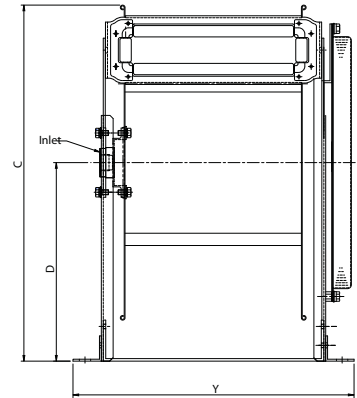
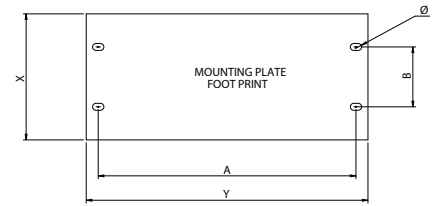
Adjustable guide arms and variable roller guide direction for versatility

Heavy duty powder coated steel construction

Heavy Duty steel spring enclosure for safety and reliability

Heavy duty stainless steel construction

Full flow heavy duty swivels



MDTP2520

Fully serviceable

Twin pedestal for strength and stability



Dimensions (mm)

Reel size	A	B	Ø	C	D	E	F	X	Y
0615	219	95	11x18	430	230	440.8	240.8	150	259
0915	237	95	11x18	485	260	495.5	270.5	150	276
1220/1320	277	95	11x18	485	260	495.5	270.5	150	316
1920	339	95	11x18	569	290	553	303	200	377
2520	409	95	11x18	565	315	531.5	281.5	200	447

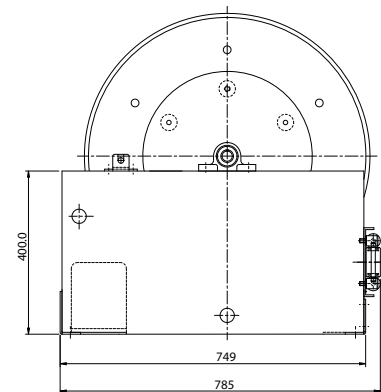
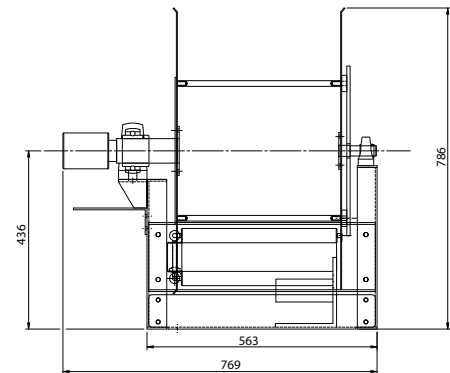
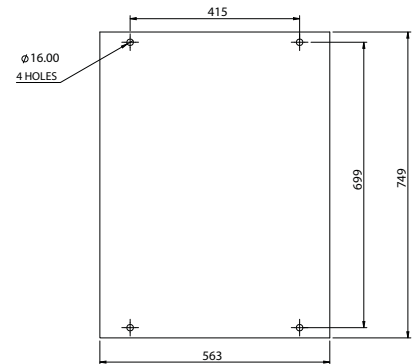
MATP1220-01 MATP1920-01 MDTP2520-01 MGTP0615-01 MGTP0915-01 MOTP1220-01 MOTP1920-01 MRTP1320N-01 MRTP2520N-01 SSR1320N-01 SSR2520N-01

Type	Air/Water	Air/Water	Diesel	Grease	Grease	Oil	Oil	Bare	Bare	Stainless Steel	Stainless Steel
Hose ID	12 mm (1/2")	19 mm (3/4")	25 mm (1")	6 mm (1/4")	9 mm (3/8")	12 mm (1/2")	19 mm (3/4")	N/A	N/A	13 mm (1/2") Swivel	25 mm (1") Swivel
Working pressure	2100 kPa (300 psi)	2100 kPa (300 psi)	3500 kPa (500 psi)	34 500 kPa (5,000 psi)	34 500 kPa (5,000 psi)	6900 kPa (1,000 psi)	6900 kPa (1,000 psi)	6900 kPa (1,000 psi)	6900 kPa (1,000 psi)	13 800 kPa (2,000 psi)	13 800 kPa (2,000 psi)
Hose length	20m	20m	20m	15m	15m	20m	20m	N/A	N/A	N/A	N/A
Max op temp	80°C	80°C	80°C	100°C	100°C	100°C	100°C	100°C	100°C	N/A	N/A
Reel inlet	1/2" BSP	3/4" BSP	1" BSP	1/4" BSP	3/8" BSP	1/2" BSP	3/4" BSP	1/2" BSP	1" BSP	1/2" BSP	1" BSP
Hose outlet	1/2" BSP	3/4" BSP	1" BSP	1/4" BSP	3/8" BSP	1/2" BSP	3/4" BSP	N/A	N/A	N/A	N/A
Warranty ¹	5 year	5 year	5 year	5 year	5 year	5 year	5 year	5 year	5 year	5 year	5 year
Weight	31.1kg	40kg	40kg	25.4kg	31.2kg	34.5kg	47.7kg	23kg	30kg	25kg	31kg

Note¹ Subject to Macnaught warranty terms and conditions, see inside back cover.

power rewind metal reels

The powered rewind reels are designed for added strength and durability for any heavy duty application. Available with electric, pneumatic or hydraulic rewind motors.



MDTP3820

Available in 24v Electric, Pneumatic or Hydraulic power rewind models



	MATP2520E-01	MATP3820E-01	MOTP2520E-01	MOTP3820E-01	MOTP3820NE-01
24v electric	MATP2520E-01	MATP3820E-01	MOTP2520E-01	MOTP3820E-01	MOTP3820NE-01
Pneumatic	MATP2520P-01	MATP3820P-01	MOTP2520P-01	MOTP3820P-01	MOTP3820NP-01
Hydraulic	MATP2520H-01	MATP3820H-01	MOTP2520H-01	MOTP3820H-01	MOTP3820NH-01
Type	Air/water	Air/water	Oil/Diesel	Oil/Diesel	Oil/Diesel
Hose ID	25mm (1")	38mm (1 1/2")	25mm (1")	38mm (1 1/2")	N/A
Hose length	20m	20m	20m	20m	N/A
Working pressure	6890kPa (1000psi)	3500kPa (500psi)	6890kPa (1000psi)	8615kPa (1250psi)	6890kPa (1000psi)
Max op temp	80°C	80°C	100°C	100°C	80°C
Reel inlet	1" BSP(F)	1 1/2" BSP (F)	1" BSP(F)	1 1/2" BSP (F)	1 1/2" BSP (F)
Hose outlet	1" BSP(M)	1 1/2" BSP (M)	1" BSP(M)	1 1/2" BSP (M)	N/A
Warranty ¹	5 year	5 year	5 year	5 year	5 year
Weight	49.5kg	145kg	49.8kg	145kg	85kg

Note¹ Subject to Macnaught warranty terms and conditions, see inside back cover.

refillable bearing lubricators

MCGL220-01

220mL capacity refillable bearing lubricator provides constant lubrication to bearings. Lubricators are supplied with a setting dial which allows for fixed dispense rates up to 12 months



MCGL100-01

100mL capacity refillable bearing lubricator provides constant lubrication to bearings.

Lubricators are supplied with a setting dial which allows for fixed dispense rates up to 12 months



greasing kits

ACK2 aviation kit

Accessories typically required when lubricating aircraft. Items included are a KDN, KDS, KDE8, KDF21, KY, KZDXL, KZHY, KZLNLJ, KZLNS, KZLNR, KZLN45, KZSNR and J65.



MAGK1 automotive greasing accessory kit

A greasing kit designed for the automotive industry. Items include KDF21, KY, KZDXL, KZHY and KDR.



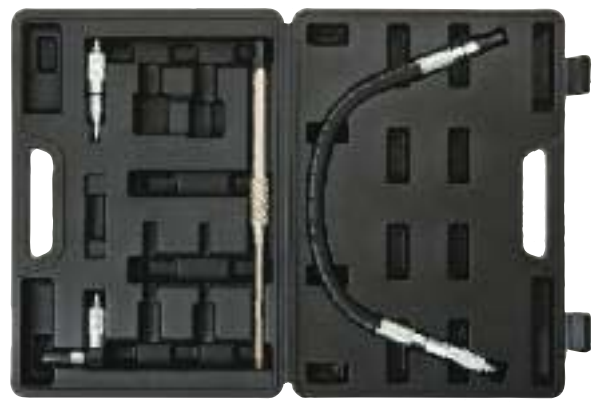
MCFK1 all-purpose air greasing accessory kit

A greasing kit designed for use with air operated greasing equipment. Items include PDF21, KGR, KSR, KZD and KDR.



MCFK2 all-purpose manual greasing accessory kit

A greasing kit designed for use with manual operated greasing equipment. Items include KDF21, KFR, KZD and KDR.

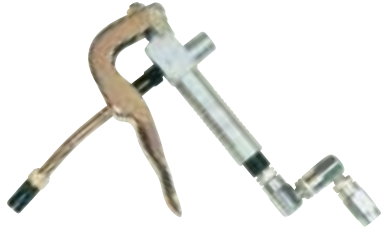


• Supplied in a moulded case. • Photos and descriptions of each item are included in the following pages

greasing accessories

B2 booster gun

Suitable for air powered greasing equipment, the B2 booster gun comes standard with the P3 Powerlube®, P6 and P8-11 Maxilube®, and the R5000GPLF greasing systems.



B2-01SG

B2 booster gun complete with hand guard.



KR pressurite™ gun

Suitable for manual greasing equipment, the KR PRESSURITE™ gun comes standard with the K3 SUPERLUBE™ and K7 MINILUBE® greasing systems.



KY coupler

Standard Supergrip™ coupler supplied with all Macnaught grease guns. Designed to fit most grease nipples and grease guns. Threads 1/8" BSP



KY-8 pack of 8

KY-50 pack of 50

KDN right angle needlepoint coupler

Ideal where access to the grease nipple is minimal.



KDR right angle coupler

For use in spaces when the area above the nipple is limited.



KDS right angle coupler

A slightly shorter version of the KDR. Along with the KDN and KDR, it can be used with a flexible extension.



KSR standard buttonhead coupler

For use on plant and machinery fitted with 5/8" buttonhead nipples. Length 72 mm (2 3/4").



KGR giant buttonhead coupler

For use on plant and machinery fitted with 7/8" buttonhead nipples. Length 85 mm (3 3/8").



KRV pressure release valve

Helps to prevent nipples from breaking off and couplers from splitting. Recommended for use with the K6 Minilube®, P3 Powerlube®, and P6 and P8 Maxilube®.



KZD needlenose coupler

Used when nipples are recessed and standard couplers would meet with interference from surrounding components (universal joints, etc). Length 93 mm (3 3/4").



KZDXL straight needlepoint coupler

Ideal for greasing the bearings on four wheel drive vehicles. Length 120 mm (4 3/4").



KIN

KIN Push-on Grease Injector Needle used to dispense grease into sealed bearings and steering components if normal nipples aren't supplied.



greasing accessories

KZE concave nipple coupler

Used when vehicles are fitted with special nipples or, in some cases, when normal nipples are damaged. Length 60 mm (2 1/4").



KZX concave nipple coupler

A similar coupler to the KZE but fitted with a rigid extension. Length 200 mm (8").



KZHY hypodermic needlepoint coupler

Ideal for use on bearings fitted with rubber dust covers. Length 130 mm (5 1/8").



KZLN45 needlepoint coupler

Push on needle point grease extension with 45° angle at the end. Ideal for use with aircrafts. Length 300 mm (12")



KZLNJ needlepoint coupler

Push on needlepoint extension with J bend at the end. Ideal for use with aircrafts. Length 300 mm (12")



KZLNR needlepoint coupler

Push on needlepoint extension with 90° angle at the end. Ideal for use with aircrafts. Length 300 mm (12").



KZLNS needlepoint coupler

Push on needlepoint grease extension, ideal for use with four wheel drive vehicles. Length 300 mm (12")



KZSNR 90° needlepoint coupler

An 110 mm (4 1/4") needlepoint coupler with a 90° bend at the end.



ZSB swivel

A 360° swivel supplied either separately or with the B2 Booster Gun. Threads 1/8" NPT (M) x 1/4" NPT (F).



KDE8 extension

A 200 mm (8") push on rigid extension coupler with a nipple to fit onto the KY coupler. For use with grease guns.



KFR rigid/flexible extension

A 330 mm (13") extension with a sliding sleeve that allows for either flexible or rigid operation. The thread is 1/8" BSP (M) and fitted with a KY coupler.



KDF13 flexible extension

A 330 mm (13") push on flexible extension with nipple to fit the KY coupler. It is suitable for the manual grease gun range and is ideal for working in confined spaces.



greasing accessories

KDF21 flexible extension

A longer 530 mm (21") version of the KDF13.



KF9 flexible extension

A 230 mm (9") high pressure flexible extension suitable for Macnaught's manual grease gun range. It is supplied with the K29 Flexigun and K53 Power Pistol, and has 1/8" BSP threads. Can be purchased separately or in packets of 10 (KF9-10)



KF17 flexible extension

A 430 mm (17") high pressure flexible extension suitable for the manual grease gun range. 1/8" BSP threads.



PF9 flexible extension

A 230 mm (9") high pressure flexible extension suitable for use with air operated greasing equipment. Its threads are 1/8" BSP (M).



PF17 flexible extension

A 430 mm (17") high pressure flexible extension suitable for use with air operated equipment. 1/8" BSP (M) threads.



PDF13 push on extension

A 330 mm (13") push - on flexible extension for air operated equipment. Ideal for working in confined spaces.



PDF21 push-on extension

A longer (530 mm or 21") version of the PDF13.



PF6 extension hose

A 4 m x 6 mm (1/4") ID high pressure extension hose for air operated greasing equipment. It is supplied with the P3 POWERLUBE® and the P6 MAXILUBE®, and has 1/4" NPT (M) threads.



PF8 feeder hose

A 2.5 m x 6 mm (1/4") ID high pressure feeder hose with 1/4" NPT (M) threads suitable for air operated greasing equipment. Supplied with the complete P8 unit (P8-11).



KT5 (2.5 kg) grease container KT6 (5 kg) grease container

An optional grease container ideal for use in conjunction with the K7 Minilube®. Also available is the K7-24, a complete Minilube® system which includes the K7 and KT5 container.



GFU grease fitting unblocker

Opens clogged grease fittings and loosens hardened grease joints. Excellent for maintaining and protecting bearings, control arms, joints, king pins, etc. Comes complete with grease coupler for connection onto the grease fitting and 2 spare seals for replacing the piston seals as they wear.



air line accessories

TA-3K lubricator kit

An airline oil lubrication kit for use with the R-Series air powered oil pumps. The oil keeps the air motor free from corrosion and reduces seal wear.



TA-7K filter & regulator kit

A filter & regulator combination that is designed to regulate the air pressure as well as remove dust, dirt & moisture from the air. Ideal for use with the P3 Powerlube®, P6 Minilube® & P8 Maxilube® grease pumps.



TA-2K wall mount connector kit

A bracket set to join the TA-7K filter/regulator & the TA-3K lubricator together to form a neat unit. *Inline lubricator and filter regulator sold separately.



oil control gun accessories

HGNZL automatic nozzle

Fully automatic non-drip nozzle



HGREX rigid extension

150 mm (6") rigid extension.



HGFEX flexible extension

250 mm (10") flexible extension.



HGFM set in place extension

300mm (12") 'set in place' extension



HGFNZ flexible extension

250mm (10") flexible extension with non drip nozzle



CF strainer

This fine mesh strainer may be used in conjunction with Macnaught's C-Series range of pumps (C7, C11 and C13) for pumping transmission fluids or hydraulic oils. The CF is included in the pump when the CF7 (CF-51) Oil Pump is ordered.



oil feeder hoses

TB-20K

A 3 m (10 ft) high-pressure feeder hose suitable for use with the T512 Oilmaster® pump. The hose has an I.D. of 12.5 mm (1/2") and a working pressure of 6 900 kPa (1 000psi, 69 bar).



TD-25K

This 3 m (10 ft) low pressure feeder hose is ideal for use with the R300 ratio oil pump, and the T312 Oilmaster® pump. The hose has an I.D. of 12.5 mm (1/2") and a working pressure of 2 800 kPa (400 psi, 28 bar).



general accessories

TD20 wall bracket

A 2" wall mounting bracket for remote installations and suitable for use with all of Macnaught's air operated oil pumps



fuel accessories

DV

Fittings for connecting DM 100/150 meters to RVP pump.



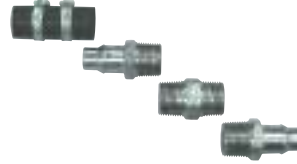
DG

Fittings for connecting DM 100/150 meters to GT pumps.



DH

Fittings for connecting DM 100/150 meters to HP pumps.



DF

Fittings kit for connecting DM 100/150 meters to electric fuel pumps.



fuel nozzles

HNU nozzle

Suitable for unleaded petrol, this nozzle is designed to fit either the GT Rapidflo™ or the HP Litrestroke™ pumps.



fuel filters

HA1S fuel filter (10 µm)

Inlet thread: 1" NPT
Outlet thread: 1" NPT



HA7S filter element (10 µm)

The 10 µm filter element used in the GB, HA and VA fuel filters. Supplied with seals.



fuel strainers

Stainless steel mesh elements used in the GB, HA and VA fuel filters + HAIS
HASS40 (40 mesh Stainless Steel)
HASS80 (80 mesh Stainless Steel)



■ hose reel accessories

BB100 Retracta® bracket

An optional bracket for mounting RETRACTA® hose reels on a bench, floor or high wall.



BU100 Retracta® bracket

Standard bracket supplied with all RETRACTA® hose reels for either wall or overhead mounting. Also available in Stainless Steel (BU100s).



■ trolleys

TR5 trolley

Designed to suit 15 L (4 US g) to 25 L (6 US g) oil, and 12.5 kg (28 lbs) to 22 kg (48 lbs) grease containers.



TR6 trolley

Designed to suit 50 L (13 US g) to 60 L (16 US g) oil, and 50 kg (110 lbs) to 55 kg (120 lbs) grease containers.



TR205 trolley

Heavy duty trolley designed to suit drums up to 205 L and 180kg. Large main wheels with a steerable braked third wheel. Very low loading height.



macnaught warranty



mechanical parts



mechanical parts



wearing parts



electrical parts

1. Macnaught Pty Ltd ("Macnaught") warrants that all products manufactured by Macnaught and/or supplied by Macnaught under the "Macnaught" brand, excluding Macnaught Flow Measurement products, components subject to wear and electronic or electrical components, will be free from any defects caused by faulty materials or workmanship ("Warranty") for a period of 5 years from the date of purchase of the product.
2. For products (excluding Macnaught Flow Measurement products) which carry the "Macnaught design" endorsement, an additional Warranty period of 5 years applies to all mechanical components, giving a total Warranty period of 10 years for mechanical components.
3. For Macnaught Flow Measurement products, the Warranty period is 2 years from the date of purchase of that product.
4. For components contained in all products which are usually subject to wear from normal operation of the products (such as o-rings, seals, bushes, springs (excluding Retracta coil spring), hoses and rechargeable batteries), the Warranty period is 12 months from the date of purchase of the relevant product.
5. For any electronic or electrical component which may be contained in a product, the warranty period is 2 years from the date of purchase of the relevant product.
6. For products and components which are not manufactured by Macnaught and are supplied by Macnaught under a brand name other than "Macnaught", the Warranty period is the longer of 12 months from the date of purchase of the relevant product and the period of the manufacturer's warranty.
7. The warranties contained in clauses 1, 2, 3, 4, 5 and 6 above are conditional on the purchaser, during the relevant Warranty period:
 - a. delivering to Macnaught by email (warranty@macnaught.com.au) or by mail (Attn; warranty claims, Macnaught Pty Ltd, 41-49 Henderson Street, Turrella, New South Wales 2205) a detailed notice setting out full details of any defect in any product and details of the date and place of purchase (together with copies of purchase receipts and/or other supporting documents); and

- b. at the purchaser's own cost, returning the defective product to the nearest authorised Macnaught service centre.
8. Subject to compliance by the purchaser with clause 7, Macnaught shall, at its option, repair or replace any product or component found defective by its inspection by reason of faulty materials or workmanship of Macnaught.
9. This Warranty does not cover the failure of products, parts or components which, in the sole judgment of Macnaught, arises other than from faulty materials or workmanship of Macnaught, including misuse, abrasion, corrosion, negligence, accident, substitution of non-Macnaught parts, unauthorised modification, improper use, storage or handling, faulty installation or tampering by the purchaser or any third party.
10. If Macnaught's inspection discloses no defect in material or workmanship, repair or replacement and return (at Macnaught's sole option) will be made at customary charges, which will be advised to the purchaser.
11. If Macnaught's inspection discloses a defect in material or workmanship, repair or replacement and return will be made at Macnaught's expense.
12. Macnaught's liability and the purchaser's rights under this Warranty shall be limited to the repair or replacement of defective products or components and in particular, shall not extend to any direct, special, indirect or consequential damage or losses of any nature.
13. To the maximum extent permitted by law, the foregoing Warranty supersedes, voids and is in lieu of all or any other warranties. However, the benefits given by the warranty are in addition to other rights and remedies of the consumer under any law in relation to the goods to which the warranty relates.
14. Macnaught's goods come with guarantees that cannot be excluded under the Australian Consumer Law. You are entitled to a replacement or refund for a major failure and compensation for any other reasonably foreseeable loss or damage. You are also entitled to have the goods repaired or replaced if the goods fail to be of acceptable quality and the failure does not amount to a major failure.

This Warranty does not form part of, nor does it constitute, a contract between Macnaught and the end-user or purchaser. It is additional to any warranty given by the seller of the products.



Specifically for underground coal mining applications, the Underground Mine Compatible logo denotes products that contain no exposed aluminium.

Macnaught Pty Ltd
41-49 Henderson St, Turrella
Sydney NSW 2205 Australia
Ph: +61-2-9567 0401
Fax: +61-2-9597 7773
email: info@macnaught.com.au
website: www.macnaught.com.au

